

# NATIONAL BROKERS LIMITED

<http://nationalbrokersbd.com/>

**Tea Auctioneers since 1948**

## TEA MARKET REPORT – Sale 22 held on Wednesday 9<sup>th</sup> October, 2019

CTC LEAF: 67,921 packages of Current Season and 75 packages of Old Season teas on offer met with a fair demand at progressively lower rates with heavy withdrawals.

BROKENS: Good Brokens once again met with a fairly good demand at a drop of Tk.3/- to Tk.5/- which declined further as the sale progressed. Medium and plain Brokens met with less enquiry at lower rates and there were more withdrawals this week. Poor varieties met with only a selective enquiry at lower rates.

FANNINGS: Good Fannings met with a fairly good demand but were easier by upto Tk.5/- and sometimes more with the progress of sale. Their Medium and plainer varieties met with less demand with prices easing further with more withdrawals. Poor varieties followed a similar trend.

CTC DUST: 11,759 packages of Current Season and 110 packages of Old Season teas on offer met with a

fairly good demand. Good and Medium teas sold well at around last levels except for CD which was lower by Tk.8/- to Tk.10/-. Others met with less demand and also witnessed fair withdrawals. Poor and BLF teas met with some enquiry but again at lower rates. Blenders lent strong support with fair interest from the Loose tea buyers.

COMMENTS: A larger weight of tea was offered this week which met with a fair demand particularly the better varieties but prices eased further. Medium and plainer varieties met with less demand at easier rates where withdrawals continued to be very heavy. Blenders were the mainstay of the market with only a little interest from the Loose tea buyers.

Dusts were an easier market.

**Our catalogue (Sale 22): Avg: Tk 194.46, Sold 62.5% & ( Sale 21 ) Avg: Tk 197.24, sold 63.1%.**

### Quotations – This Week – (In Taka)

Brokens	This Week	Last Week	Fannings	This week	Last Week	Dust	This week	Last Week
Large	180-190	185-195	Best	198-203	200-205	PD	181-217	189-219
Medium	182-190	187-195	Good	190-195	192-197	RD	123-227	110-230
Small	183-192	188-197	Medium	182-187	187-192	D	145-237	130-235
Plain	135-165	140-160	Plain	135-165	140-160	CD	180-300	153-296
BLF	125-150	130-155	BLF	125-150	130-155	BLF	123-195	110-200

(BLF- Bought Leaf Factory)

Exchange Rates 09 October, 2019 Sterling Pound: Tk.101.0931, dollar: Tk. 83.4708

Top Prices – This Week

Category – CTC	Garden	Grade	Package	Price	Buyer(s)
Brokens	Rangapani /Sonarupa	GBOP/BOP	20/20	210/-	Jamal /Taj
Fannings	Madhupur	PF	20	260/-	Sharif
Clonal Brokens	Clevedon	GBOPS	10	306/-	Sathi
Clonal Fannings	Clevedon	OF	20	293/-	VIP
PD/RD (Incl Clone)	Kaiyacherra Dalu	PD(C)	10	285/-	Kamona
D (Incl Clone)	Clevedon	D(C)	10	269/-	Shawon
CD (Incl Clone)	* Amrail	CD	10	300/-	Popular(Dhaka)

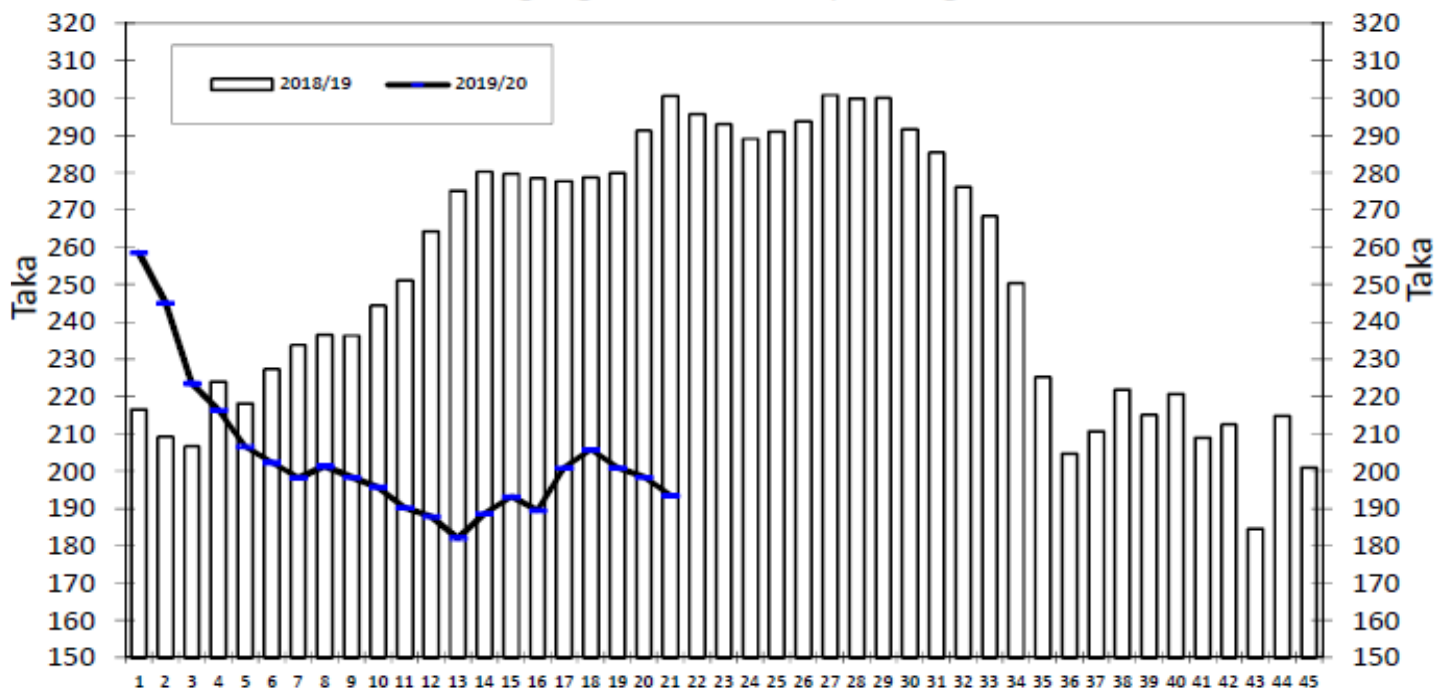
\* Above price(s) realised in our catalogue

### Offerings

Type	This Sale ( Sale 22 )				Next Sale ( Sale 23 )			
	Season 2019-2020		Season 2018-2019		Season 2019-2020		Season 2018-2019	
	Packages	Qty/Kg	Packages	Qty/Kg	Packages	Qty/Kg	Packages	Qty/Kg
Leaf	67,996	3,726,747	45,317	2,483,637	72,888	3,994,262	42,659	2,335,674
Dust	11,869	652,164	9,797	538,087	13,071	716,291	9,695	532,106
Total	79,865	4,378,910	55,114	3,021,724	85,959	4,710,553	52,354	2,867,780

Chittagong Auction Average: Sale 21  
Season 2019/20: Tk. 193.46, Season 2018/19: Tk. 300.58

### Chittagong Auction Weekly Average



Weekly Sale

**Chittagong Auction Statistics - Sale: 21**

**Quantities of Teas Sold & Average Prices Realised**

Category	For the Sale				Up-to-Date Sale							
	Season 2018/19		Season 2019/20		Season 2018/19		Season 2019/20		(+/-) Season 2018/19			
	Qty. (Kg)	Taka	Qty. (Kg)	Taka	Qty. (Kg)	(%)	Taka	Qty. (Kg)	(%)	Taka	Qty. (Kg)	Taka
CTC LEAF	1,773,827.9	301.28	2,272,443.0	192.72	29,224,423.4	80.7%	261.12	33,303,460.5	81.2%	198.66	4,079,037.1	-62.46
CTC DUST	384,284.8	297.36	451,926.5	197.18	6,731,138.8	18.6%	267.81	7,365,386.9	18.0%	206.91	634,248.1	-60.90
Sub-Total	2,158,112.7	300.58	2,724,369.5	193.46	35,955,562.2	99.3%	262.37	40,668,847.4	99.2%	200.16	4,713,285.2	-62.22
ORTHODOX	97.5	550.00	0.0	0.00	597.0	0.0%	552.76	297.5	0.0%	236.77	-299.5	-315.98
Total	2,158,210.2	300.59	2,724,369.5	193.46	35,956,159.2	99.3%	262.38	40,669,144.9	99.2%	200.16	4,712,985.7	-62.22
GREEN TEA	0.0	0.00	0.0	0.00	0.0	0.0%	0.00	3,125.5	0.0%	400.00	3,125.5	400.00
Total	2,158,210.2	300.59	2,724,369.5	193.46	35,956,159.2	99.3%	262.38	40,672,270.4	99.2%	200.17	4,716,111.2	-62.21
Other (s)	0.0	0.00	4,391.7	137.00	250,646.9	0.7%	206.37	317,074.5	0.8%	76.91	66,427.6	-129.46
G.Total	2,158,210.2	300.59	2,728,761.2	193.37	36,206,806.1	100%	261.99	40,989,344.9	100%	199.22	4,782,538.8	-62.77

**Buyer Purchase Analysis**

Buyer	For the Sale				Up-to-Date Sale							
	Season 2018/19		Season 2019/20		Season 2018/19		Season 2019/20		(+/-) Season 2018/19			
	Qty. (Kg)	Taka	Qty. (Kg)	Taka	Qty. (Kg)	(%)	Taka	Qty. (Kg)	(%)	Taka	Qty. (Kg)	Taka
Export	0.0	0.00	0.0	0.00	16,183.5	0%	262.10	8,778.2	0.0%	239.44	-7,405.3	-22.66
Internal	2,158,210.2	300.59	2,728,761.2	193.37	36,190,622.6	100%	261.99	40,980,566.7	100.0%	199.21	4,789,944.1	-62.78
Grand Total	2,158,210.2	300.59	2,728,761.2	193.37	36,206,806.1	100%	261.99	40,989,344.9	100%	199.22	4,782,538.8	-62.77

**Crop of Major Tea Producing & Exporting Countries**

Country	Month	For the Month			Up-to-Date		
		2018	2019	(+/-) 2018	2018	2019	(+/-) 2018
Bangladesh *	August	12.5	13.5	1.0	42.9	52.6	9.7
Malawi	August	1.7	1.7	0.0	37.1	37.7	0.6
Sri Lanka	August	21.5	26.0	4.5	203.6	210.8	7.2
North India	August	177.8	157.1	-20.7	665.3	684.6	19.3
South India	August	12.3	14.8	2.5	139.1	137.0	-2.1
All India	August	190.1	171.9	-18.2	804.4	821.6	17.2
Kenya	July	35.3	31.5	-3.8	266.3	244.1	-22.2

\* Source: Bangladesh Tea Board's Monthly Statistical Bulletin

## General + Other Market(s) This/Last Week

**KOLKATA SALE 40 – 30<sup>TH</sup> SEPTEMBER & 1<sup>ST</sup> OCTOBER, 2019**

CTC Leaf: There was good demand. Assams sold at irregular around last levels and tended easier closely following quality. Better Dooars were barely steady to irregularly easier. Plainer and BLF Dooars sold at easier levels. CTC Dust: There was good demand. Best Assams were firm whilst Good and Medium Assams were irregular around last. Dooars were irregularly easier. M/s Tata Global Beverages was active on the medium and plainer sorts in the leaf market. In the Dust market they operated on the better liquoring Assams and were active on the medium and plainer Assams as well as Dooars. M/s Hindustan Unilever was active in both the Leaf and Dust markets across all categories. Western India segments were active on the brighter liquoring Assams in both Leaf and Dust markets. Exporters operated on larger Brokens. Local buyers operated on the Dooars.

Tea Category USC/KG	Brokens	Fannings	Dusts
BEST ASSAMS	323-344	295-316	295-344
GOOD ASSAMS	295-309	267-295	295-323
MED ASSAMS	211-253	211-239	225-253
BEST DOOARS	246-274	239-253	211-225
GOOD- MED DOOARS	197-239	197-225	183-197
PLAINER DOOARS	127-169	127-169	134-169

**COONOOR SALE 40- 4<sup>TH</sup> OCTOBER, 2019**

There was good demand this week. Best liquoring teas were irregular, tending to be easier; Good sorts were easier by Rs.2 – 3; Mediums were steady to occasionally dearer, witnessing a few withdrawals; Plainers were firm to dearer upto Rs.2. Major Blenders were active; Regional Packeteers fair; The Internal Market and Exporters were selective

CTC Leaf(USC/KG)	Best	Good	Medium	Plain
	162-179	135-155	112-127	94-108

**MOMBASA SALE 41- 7<sup>TH</sup> & 8<sup>TH</sup> OCTOBER, 2019**

There was good but irregular demand for the 134,918 packages (8,982,047.00 kilos) available. 12.72% were unsold

CTC QUOTATIONS	BP1 – USC	PF1 – USC	PD – USC	D1 – USC
Best	330 – 616	294 – 340	336 – 356	296 – 346
Good	240 – 388	290 – 324	336 – 356	295 – 335
Good Medium	248 – 362	250 – 298	322 – 350	248 – 322
Medium	144 – 246	210 – 272	210 – 265	195 – 265
Lower Medium	130 – 218	108 – 232	108 – 230	100 – 228
Plainer	104 – 162	112 – 180	110 – 216	095 – 208

**SILIGURI** : Sale 40 was dropped.