

NATIONAL BROKERS LIMITED

<http://nationalbrokersbd.com/>

Tea Auctioneers since 1948

TEA MARKET REPORT – Sale 26 held on Tuesday 5th November, 2019

CTC LEAF: 73,745 packages of Current Season and 125 packages of Old Season teas on offer met with an improved demand.

BROKENS: Good Brokens met with a strong demand and were a dearer market following competition. Medium Brokens met with a fairly good demand and sold at around last levels whilst plainer types eased with quite a lot of withdrawals. Poor types were a lower market but there were a little less withdrawals in this category.

FANNINGS: Good Fannings met with a good demand and tended dearer following competition. Medium varieties met with quite a fair demand and sold at around last levels. Plainer sorts were an easier market with fair withdrawals. Poor varieties were also easier with a little less withdrawals.

CTC DUST: 11,969 packages of Current Season and 30 packages of Old Season teas on offer met with quite a good demand. Good liquoring teas sold well at

firm to slightly dearer rates. Medium teas met with a good demand and sold at around last levels. Plain and BLF categories were an easier market with more withdrawals. Blenders lent good support with fair interest from the Loose tea buyers.

COMMENTS: After a hesitant start, market firmed up and buyers competed quite freely which resulted in well made good liquoring teas gaining in value with only a little withdrawal in this category. All others witnessed a little more interest although prices in general were firm to slightly easier. Reprinted teas, however, continued to suffer very heavy withdrawals. Blenders operated in good strength whilst there was more interest from the Loose tea buyers.

Dusts sold well.

Our catalogue (Sale 26): Avg: Tk 182.98, Sold 57.6% & (Sale 25) Avg: Tk 183.69, sold 62.8%.

Quotations – This Week – (In Taka)

Brokens	This Week	Last Week	Fannings	This week	Last Week	Dust	This week	Last Week
Large	165-180	165-185	Best	193-198	191-195	PD	171-221	168-221
Medium	175-188	175-185	Good	185-190	184-189	RD	150-264	158-233
Small	178-188	175-185	Medium	175-180	175-180	D	110-274	132-252
Plain	120-140	120-150	Plain	120-140	120-150	CD	155-299	165-307
BLF	110-135	110-140	BLF	110-135	110-140	BLF	109-182	132.00

(BLF- Bought Leaf Factory)

Exchange Rates 05 November, 2019 Sterling Pound: Tk.. 106.9798, dollar: Tk. 83.5705

Top Prices – This Week

Category – CTC	Garden	Grade	Package	Price	Buyer(s)
Brokens	* Madhupur	GBOP(S)	20	276/-	Taj/Ali
Fannings	* Madhupur	PF	10	252/-	Aftab
Clonal Brokens	Clevedon	GBOP	10	347/-	AKT
Clonal Fannings	Kaiyacherra Dalu	OF	10	337/-	HTS
PD/RD (Incl Clone)	Kaiyacherra Dalu	PD	10	277/-	AKT
D (Incl Clone)	* Madhupur	D(C)BT1	10	274/-	MA
CD (Incl Clone)	* Amrail	CD	10	299/-	LC

* Above price(s) realised in our catalogue

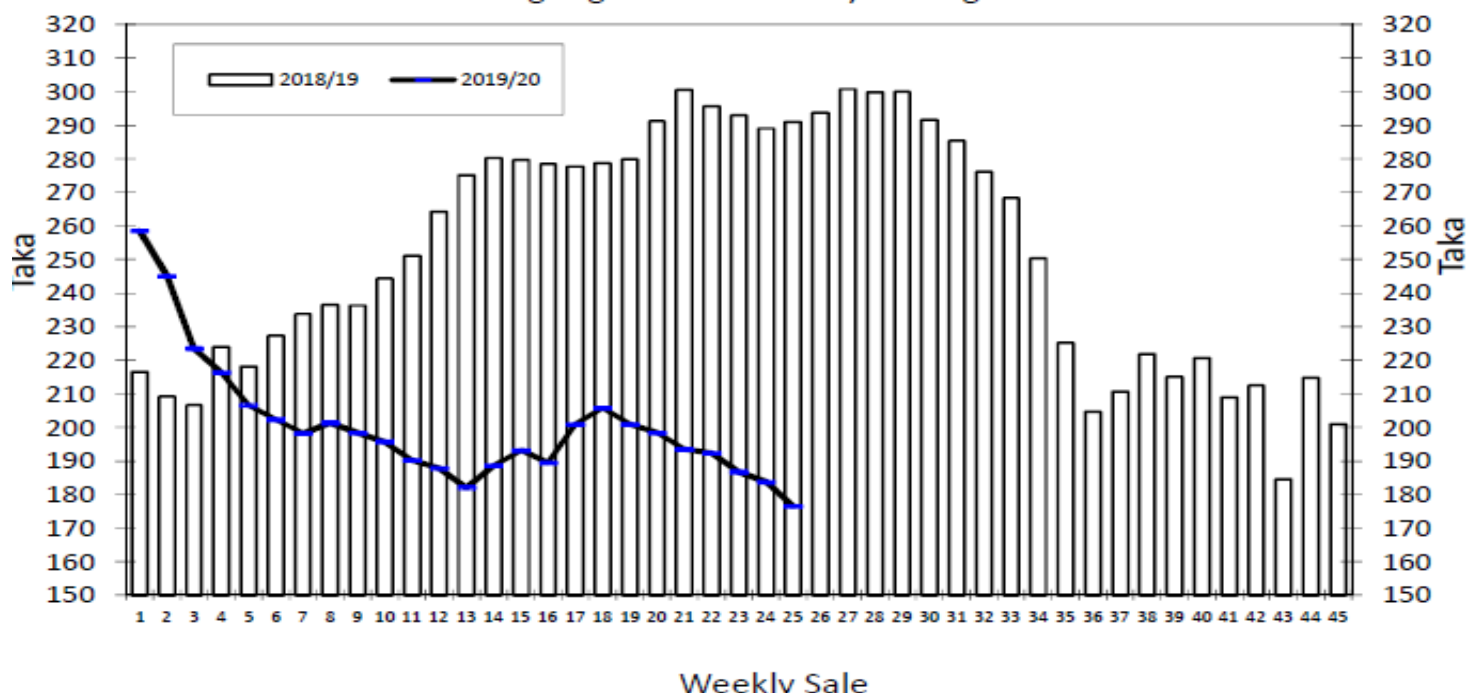
Offerings

Type	This Sale (Sale 26)				Next Sale (Sale 27)			
	Season 2019-2020		Season 2018-2019		Season 2019-2020		Season 2018-2019	
	Packages	Qty/Kg	Packages	Qty/Kg	Packages	Qty/Kg	Packages	Qty/Kg
Leaf	73,870	4,047,673	39,669	2,172,857	57,868	3,171,166	41,054	2,249,456
Dust	11,999	659,035	7,081	388,681	10,580	579,784	7,771	426,808
Total	85,869	4,706,708	46,750	2,561,538	68,448	3,750,950	48,825	2,676,263

Chittagong Auction Average: Sale 25

Season 2019/20: Tk. 176.54, Season 2018/19: Tk. 291.08

Chittagong Auction Weekly Average



Chittagong Auction Statistics - Sale: 25
Quantities of Teas Sold & Average Prices Realised

Category	For the Sale				Up-to-Date Sale										
	Season 2018/19		Season 2019/20		Season 2018/19		Season 2019/20		Season 2018/19		Season 2019/20		(+/-) Season 2018/19		
	Qty. (Kg)	Taka	Qty. (Kg)	Taka	Qty. (Kg)	(%)	Taka	Qty. (Kg)	(%)	Taka	Qty. (Kg)	(%)	Taka	Qty. (Kg)	Taka
CTC LEAF	2,091,915.5	292.04	1,416,806.5	175.03	37,600,944.9	80.8%	268.15	40,504,858.0	81.3%	196.14	2,903,913.1	-72.02			
CTC DUST	449,597.1	286.59	294,603.1	183.79	8,660,848.3	18.6%	272.77	8,971,745.3	18.0%	204.03	310,897.0	-68.74			
Sub-Total	2,541,512.6	291.08	1,711,409.6	176.54	46,261,793.2	99.4%	269.02	49,476,603.3	99.3%	197.57	3,214,810.1	-71.45			
ORTHODOX	0.0	0.00	0.0	0.00	757.5	0.0%	550.47	297.5	0.0%	236.77	-460.0	-313.70			
Total	2,541,512.6	291.08	1,711,409.6	176.54	46,262,550.7	99.4%	269.02	49,476,900.8	99.3%	197.57	3,214,350.1	-71.45			
GREEN TEA	0.0	0.00	0.0	0.00	0.0	0.0%	0.00	3,423.0	0.0%	452.15	3,423.0	452.15			
Total	2,541,512.6	291.08	1,711,409.6	176.54	46,262,550.7	99.4%	269.02	49,480,323.8	99.3%	197.59	3,217,773.1	-71.44			
Other (s)	0.0	0.00	2,191.0	80.00	284,434.0	0.6%	211.11	327,480.2	0.7%	78.06	43,046.2	-133.05			
G.Total	2,541,512.6	291.08	1,713,600.6	176.42	46,546,984.7	100%	268.67	49,807,804.0	100%	196.80	3,260,819.3	-71.87			

Buyer Purchase Analysis

Buyer	For the Sale				Up-to-Date Sale										
	Season 2018/19		Season 2019/20		Season 2018/19		Season 2019/20		Season 2018/19		Season 2019/20		(+/-) Season 2018/19		
	Qty. (Kg)	Taka	Qty. (Kg)	Taka	Qty. (Kg)	(%)	Taka	Qty. (Kg)	(%)	Taka	Qty. (Kg)	(%)	Taka	Qty. (Kg)	Taka
Export	0.0	0.00	0.0	0.00	16,183.5	0.03%	262.10	15,318.4	0.03%	218.26	-865.1	-43.84			
Internal	2,541,512.6	291.08	1,713,600.6	176.42	46,530,801.2	99.97%	268.67	49,792,485.6	99.97%	196.79	3,261,684.4	-71.88			
Grand Total	2,541,512.6	291.08	1,713,600.6	176.42	46,546,984.7	100%	268.67	49,807,804.0	100%	196.80	3,260,819.3	-71.87			

Crop of Major Tea Producing & Exporting Countries

Country	Month	For the Month			Up-to-Date		
		2018	2019	(+/-) 2018	2018	2019	(+/-) 2018
Bangladesh *	September	12.0	13.4	1.4	54.9	65.9	11.1
Malawi	September	3.6	2.1	-1.5	40.6	39.8	-0.8
Sri Lanka	September	19.4	21.7	2.3	223.0	232.7	9.7
North India	September	155.4	167.8	12.4	820.7	852.4	31.7
South India	September	19.4	16.9	-2.5	158.5	153.9	-4.6
All India	September	174.8	184.7	9.9	979.2	1006.3	27.1
Kenya	August	37.4	37.2	-0.2	303.7	281.3	-22.4

* Source: Bangladesh Tea Board's Monthly Statistical Bulletin

General + Other Market(s) This/Last Week

KOLKATA SALE 44- 30TH /31ST OCTOBER & 1ST NOVEMBER, 2019

Best and good Assam Broken met with irregular demand and were mostly easier to barely steady. Other Assams were irregular closely following quality. Best and good Assam Fannings continued to meet with good interest though levels saw some decline compared to the highs seen in the previous week. M/s Tata Global Beverages was active across a wide range of teas in both markets. M/s Hindustan Unilever was active in both sales, and was especially active on brighter liquoring Assam Dusts. M/s Unilever Exports was active in the leaf category on Fannings as well as Broken. Other Export accounts showed some interest on larger Broken and Fannings.

Tea Category USC/KG	Broken	Fannings	Dusts
BEST ASSAMS	340-368	326-347	347-368
GOOD ASSAMS	297-326	290-319	326-340
MED ASSAMS	213-255	213-241	213-269
BEST DOOARS	248-262	241-255	220-234
GOOD- MED DOOARS	198-234	198-227	184-205
PLAINER DOOARS	128-170	128-170	128-170

SILIGURI SALE 44- 30TH OCTOBER, 2019

Good demand. Best/good and some better medium sorts were firm to occasionally dearer. Clean and well made medium/plainer sorts were steady with the remainder tending easier. DUST: Good demand steady to easier levels. All sections operated.

Quotations (USC/KG)	Broken(USC/kg)	Fannings(USC/kg)	Dust (USC/kg)
GOOD / BEST	248-340	241-326	213-276
MEDIUM / BETTER MEDIUM	177-241	177-234	170-205
COMMON / BLF	114-170	114-170	114-163

COONOOR SALE 44- 1ST NOVEMBER, 2019

There was much reduced demand this week at easier levels. The Best liquoring teas eased by Rs.5 – 7 and the Good & Medium sorts by Rs.3 – 4. There were heavy withdrawals in these three categories. Plainers eased by Rs.2 – 3.

CTC Leaf(USC/KG)	Best	Good	Medium	Plain
	142-164	121-133	102-114	88-98

MOMBASA SALE 44- 28TH & 29TH OCTOBER, 2019

There was good demand for the 139,412 packages (9,205,150.50 kilos) in the market at the start which eased as the sale progressed closing at irregular rates with prices closely following quality and 11.61% remained without bids.

CTC QUOTATIONS	BP1 – USC	PF1 – USC	PD – USC	D1 – USC
Best	250 – 664	278 – 340	314 – 370	326 – 363
Good	270 – 379	268 – 300	314 – 336	325 – 342
Good Medium	270 – 360	245 – 288	314 – 330	256 – 347
Medium	154 – 272	218 – 256	224 – 270	220 – 287
Lower Medium	130 – 190	145 – 228	120 – 227	115 – 228
Plainer	130 – 170	090 – 184	078 – 200	092 – 200