

NATIONAL BROKERS LIMITED

<http://nationalbrokersbd.com/>

Tea Auctioneers since 1948

TEA MARKET REPORT – Sale 33 held on Tuesday 24th December, 2019

CTC LEAF: 63,824 packages of Current Season & 384 packages of Old Season teas on offer met with a fairly good demand.

BROKENS: All clean Brokens were a fairly strong feature and were generally firm to slightly dearer following competition. Other varieties saw more demand but sold at around last levels. However, there were some withdrawals particularly for the plainer varieties. Poor types met with a restricted demand and only a few were sold and there were heavy withdrawals.

FANNINGS: Good liquoring types were a stronger feature and were mostly well competed for resulting in higher prices. Medium varieties saw a better demand and were generally firm. Plain and poor types met with a limited interest but were generally easier with several withdrawals.

CTC DUST: 9,726 packages of Current Season teas on offer met with an improved demand. Good liquoring teas once again met with good competition and were dearer by Tk.3/- to Tk.5/- closely following quality. Others also sold well at around last levels. However, plain, BLF teas were easier and also witnessed quite fair withdrawals. Blenders lent strong support with fair interest from the Loose tea buyers.

COMMENTS: Market followed a similar trend as of last week, whereby good liquoring types continued to meet with a stronger demand at higher rates. Blenders were the mainstay of the market with only limited support from the Loose tea buyers.

Dusts sold well.

Our catalogue (Sale 33): Avg: Tk 186.39, Sold 60.5% & (Sale 32) Avg: Tk 176.12, sold 60.7%.

Quotations – This Week – (In Taka)

Brokens	This Week	Last Week	Fannings	This week	Last Week	Dust	This week	Last Week
Large	155-165 nom	155-170	Best	205-215	200-210	PD	160-249	168-262
Medium	165-180	160-175	Good	185-200	185-195	RD	108-249	100-267
Small	170-185	165-180	Medium	165-180	160-175	D	132-264	100-266
Plain	115-145	110-140	Plain	115-145	110-140	CD	125-275	143-284
BLF	110-135	105-130	BLF	110-135	105-130	BLF	108-165	100-170

(BLF- Bought Leaf Factory)

Exchange Rates 24th December, 2019 Sterling Pound: Tk.. 1106.6626, dollar: Tk. 83.6702

Top Prices – This Week

Category – CTC	Garden	Grade	Package	Price	Buyer(s)
Brokens	* Madhupur	GBOP	10	258/-	AKT
Fannings	* Chandpur Belgaon	OFS	10	269/-	Imam
Clonal Brokens	Kaiyacherra Dalu	GBOP	20	361/-	AKT
Clonal Fannings	Kaiyacherra Dalu	OF	20	319/-	Nishat/TS
PD/RD (Incl Clone)	Cleavedon	RD(C)	10	285/-	Kamona
D (Incl Clone)	Cleavedon	D(C)	10	288/-	Aftab
CD (Incl Clone)	* Madhupur	CD(BT1)	10	275/-	Al-Amin

* Above price(s) realised in our catalogue

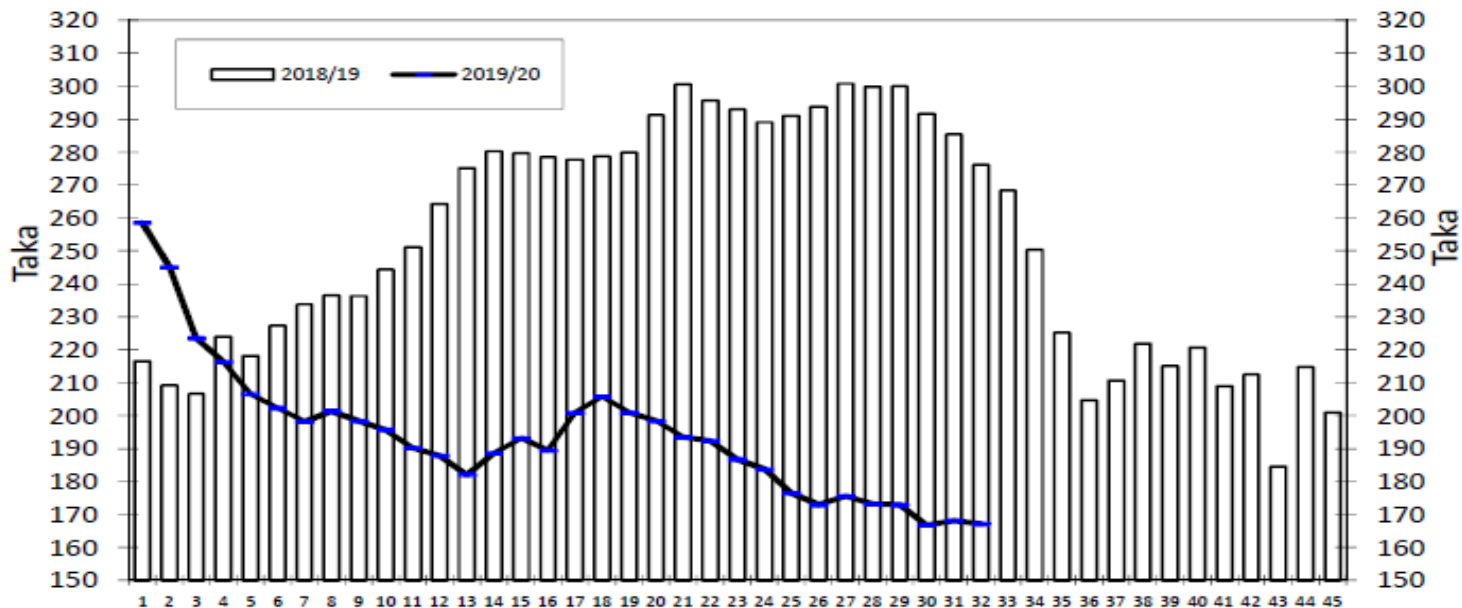
Offerings

Type	This Sale (Sale 33)				Next Sale (Sale 34)			
	Season 2019-2020		Season 2018-2019		Season 2019-2020		Season 2018-2019	
	Packages	Qty/Kg	Packages	Qty/Kg	Packages	Qty/Kg	Packages	Qty/Kg
Leaf	64,208	3,516,827	45,176	2,476,064	43,979	2,410,049	48,184	2,439,451
Dust	9,726	533,698	7,526	414,144	6,292	344,802	7,696	423,165
Total	73,934	4,050,525	52,702	2,890,208	50,271	2,754,851	55,880	2,862,616

Chittagong Auction Average: Sale 32

Season 2019/20: Tk. 167.19, Season 2018/19: Tk. 276.24

Chittagong Auction Weekly Average



Weekly Sale

Chittagong Auction Statistics - Sale: 32

Quantities of Teas Sold & Average Prices Realised

Category	For the Sale				Up-to-Date Sale							
	Season 2018/19		Season 2019/20		Season 2018/19		Season 2019/20		(+/-) Season 2018/19			
	Qty. (Kg)	Taka	Qty. (Kg)	Taka	Qty. (Kg)	(%)	Taka	Qty. (Kg)	(%)	Taka	Qty. (Kg)	Taka
CTC LEAF	1,550,235.0	274.27	2,248,184.5	162.95	49,905,304.5	81.1%	274.10	54,169,857.0	81.6%	188.99	4,264,552.5	-85.10
CTC DUST	340,966.2	285.23	460,064.0	187.91	11,289,275.7	18.3%	278.56	11,883,783.9	17.9%	199.13	594,508.2	-79.43
Sub-Total	1,891,201.2	276.24	2,708,248.5	167.19	61,194,580.2	99.4%	274.92	66,053,640.9	99.5%	190.82	4,859,060.7	-84.10
ORTHODOX	0.0	0.00	0.0	0.00	1,013.5	0.0%	545.30	297.5	0.0%	236.77	-716.0	-308.53
Total	1,891,201.2	276.24	2,708,248.5	167.19	61,195,593.7	99.4%	274.93	66,053,938.4	99.5%	190.82	4,858,344.7	-84.11
GREEN TEA	0.0	0.00	0.0	0.00	0.0	0.0%	0.00	3,572.0	0.0%	475.00	3,572.0	475.00
Total	1,891,201.2	276.24	2,708,248.5	167.19	61,195,593.7	99.4%	274.93	66,057,510.4	99.5%	190.83	4,861,916.7	-84.09
Other (s)	0.0	0.00	11,529.0	105.31	342,868.0	0.6%	217.87	350,253.9	0.5%	79.21	7,385.9	-138.66
G.Total	1,891,201.2	276.24	2,719,777.5	166.93	61,538,461.7	100%	274.61	66,407,764.3	100%	190.25	4,869,302.6	-84.36

Buyer Purchase Analysis

Buyer	For the Sale				Up-to-Date Sale							
	Season 2018/19		Season 2019/20		Season 2018/19		Season 2019/20		(+/-) Season 2018/19			
	Qty. (Kg)	Taka	Qty. (Kg)	Taka	Qty. (Kg)	(%)	Taka	Qty. (Kg)	(%)	Taka	Qty. (Kg)	Taka
Export	0.0	0.00	41,928.6	94.18	16,183.5	0.03%	262.10	148,843.5	0.22%	107.01	132,660.0	-155.09
Internal	1,891,201.2	276.24	2,677,848.9	168.06	61,522,278.2	99.97%	274.61	66,258,920.8	99.78%	190.43	4,736,642.6	-84.18
Grand Total	1,891,201.2	276.24	2,719,777.5	166.93	61,538,461.7	100%	274.61	66,407,764.3	100%	190.25	4,869,302.6	-84.36

Crop of Major Tea Producing & Exporting Countries

Country	Month	For the Month			Up-to-Date		
		2018	2019	(+/-) 2018	2018	2019	(+/-) 2018
Bangladesh *	November	9.1	10.3	1.2	75.9	89.6	13.8
North India	October	155.8	151.7	-4.1	976.5	1004.1	27.6
South India	October	27.0	25.2	-1.8	185.5	179.2	-6.3
All India	October	182.8	176.9	-5.9	1162.0	1183.3	21.3
Kenya	October	49.3	46.3	-3.0	395.5	363.1	-32.4
Malawi	October	2.2	2.3	0.1	42.8	42.0	-0.8
Sri Lanka	October	29.1	20.8	-8.3	252.7	253.7	1.0

* Source: Bangladesh Tea Board's Monthly Statistical Bulletin

General + Other Market(s) This/Last Week

KOLKATA SALE 51- 17TH, 18TH & 19TH DECEMBER, 2019

CTC Leaf: There was good demand. Brightest Assam descriptions were firm and at times dearer. Other good liquoring, cleaner sorts were barely steady. Good liquoring and cleaner Assam Fannings were well supported, often selling at similar and higher levels than comparable Brokens grades. Browner, fibrous and plainer liquoring Assams met with lower demand and were easier. Western India segments were active on good liquoring invoices. Regional packeteers operated on medium and plainer teas. Local buyers were active on the Dooars and other clean, well-made sorts.

Tea Category USC/KG	Brokens	Fannings	Dusts
BEST ASSAMS	309-337	295-323	337-351
GOOD ASSAMS	253-295	267-295	295-330
MED ASSAMS	211-239	211-239	211-281
BEST DOOARS	253-295	253-281	211-232
GOOD- MED DOOARS	197-225	197-225	182-197
PLAINER DOOARS	126-168	126-168	126-168

SILIGURI SALE 51- 18TH DECEMBER, 2019

LEAF: Good demand. Best/good and better medium category eased irregularly in line with quality. Common/BLF segment saw better movement at steady to easier levels.

Quotations (USC/KG)	Brokens(USC/kg)	Fannings(USC/kg)	Dust (USC/kg)
GOOD / BEST	239-309	225-295	211-267
MEDIUM / BETTER MEDIUM	175-232	175-218	168-197
COMMON / BLF	112-168	112-168	112-161

COONOOR SALE 51- 20TH DECEMBER, 2019

This week, demand saw an improvement. The Best liquoring teas were dearer by Rs.7 – 8, sometimes more; Good sorts were dearer by Rs.3 – 5; Better Mediums were dearer by Rs.2 – 3 while the Regular Mediums were steady, tending dearer upto Rs.2; Plainer teas were firm to occasionally dearer. Major Blender was forceful; Regional Packeteers were active; The Exporters and the Internal trade were selective.

CTC Leaf(USC/KG)	Best	Good	Better Med	Regular Med	Plain
	160-182	129-150	115-124	101-109	93-95

MOMBASA SALE 51- 16TH & 17TH DECEMBER, 2019

Improved general demand for the 176,500 packages (11,661,455.00 kilos) in the market with 10.91% remaining unsold.

CTC QUOTATIONS	BP1 – USC	PF1 – USC	PD – USC	D1 – USC
Best	260 – 642	276 – 336	276 – 356	292 – 334
Good	200 – 300	270 – 300	273 – 300	280 – 322
Good Medium	242 – 288	256 – 290	270 – 288	280 – 316
Medium	170 – 245	220 – 275	227 – 275	200 – 280
Lower Medium	120 – 178	100 – 216	100 – 200	100 – 200
Plainer	120 – 150	088 – 192	076 – 180	080 – 180

WE WISH YOU A MERRY CHRISTMAS