

NATIONAL BROKERS LIMITED

<http://nationalbrokersbd.com/>

Tea Auctioneers since 1948

TEA MARKET REPORT – Sale 37 held on Tuesday 21st January, 2020

CTC LEAF: 45,414 packages of Current Season & 1 package of Old Season teas on offer met with a restricted demand with a further fall in price and heavier withdrawals.

BROKENS: A few lines of clean BOPs initially met with a good demand and were firm but thereafter demand slackened and prices declined with some withdrawals. All other varieties particularly the poorer types saw less demand and were mostly unsold. Poorest met with a limited interest at lower rates.

FANNINGS: There were only a few clean Fannings on offer which saw a fair demand and eased as the sale progressed. However, declined further and there were more withdrawals. Plain types were difficult of sale and suffered heavy withdrawals. Poorest saw only some interest.

CTC DUST: 8,000 packages of Current Season teas on offer met with a fair demand. Good liquoring teas

were firm to slightly dearer market. Medium teas met with a fair demand with some withdrawals Plain and BLF teas were easier by Tk.5/- to Tk.8/- with more withdrawals compared to last. Blenders lent fair support. Loose tea buyers were selective.

COMMENTS: Offerings mostly comprised of plain types and reprints. Owing to a discriminating market, teas suffered heavy withdrawals especially at the latter half of the sale. Blenders lent fair support but there was hardly any interest from the Loose tea buyers. Pakistan buyers operated for a handful of teas at lower levels, at rarely exceeding Tk.90/-.

Dusts met with a fair demand.

Our catalogue (Sale 37): Avg: Tk 165.27, Sold 39.0% & (Sale 36) Avg: Tk 173.12, sold 50.8%.

Quotations – This Week – (In Taka)

Brokens	This Week	Last Week	Fannings	This week	Last Week	Dust	This week	Last Week
Large	130-140 nom	130-140 nom	Best	185-195	190-200 nom	PD	137-233	143-260
Medium	130-150	145-160	Good	160-175	165-180	RD	110-250	110-235
Small	135-155	150-165	Medium	135-145	145-155	D	135-259	134-265
Plain	90-115	100-130	Plain	90-115	100-130	CD	175-269	184-266
BLF	105-130	110-130	BLF	105-130	110-130	BLF	148	110-122

(BLF- Bought Leaf Factory)

Exchange Rates 21ST January, 2020 Sterling Pound: Tk108.2382, dollar: Tk. 83.6702

Top Prices – This Week

Category – CTC	Garden	Grade	Package	Price	Buyer(s)
Brokens	Madhupur	GBOP	10	239/-	Danish
Fannings	* Madhupur	PF	10	247/-	Orion
Clonal Brokens	Kaiyacherra Dalu	GBOP	11	305/-	Padma
Clonal Fannings	Clevedon	OF	10	300/-	HTS
PD/RD (Incl Clone)	Kaiyacherra Dalu	PD(C)	20	265/-	Danish
D (Incl Clone)	* Daragaon /Madhupur	D/D(C)BT1	10/10	259/-	Orion/Danish/AKT
CD (Incl Clone)	* Srigobindpur	CD(C)	10	269/-	Al-Amin

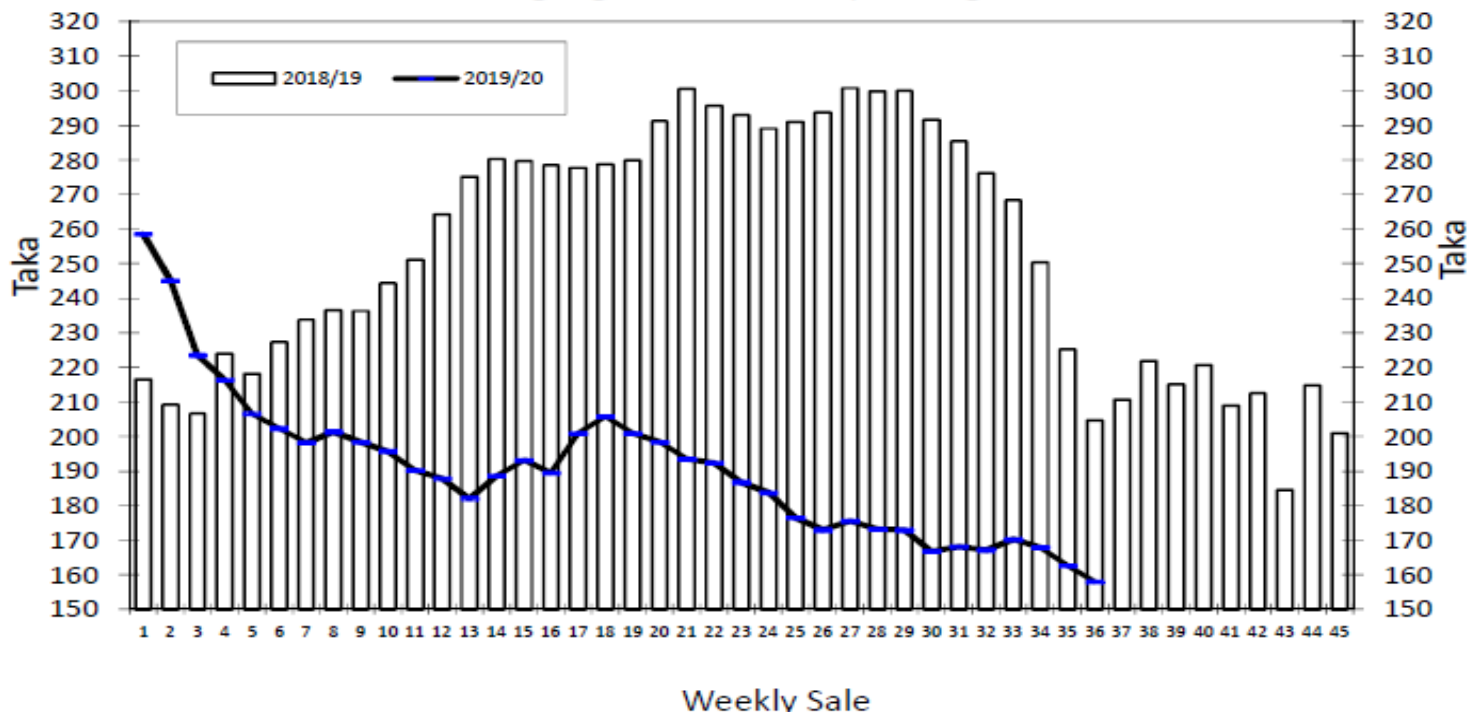
* Above price(s) realised in our catalogue

Offerings

Type	This Sale (Sale 37)				Next Sale (Sale 38)			
	Season 2019-2020		Season 2018-2019		Season 2019-2020		Season 2018-2019	
	Packages	Qty/Kg	Packages	Qty/Kg	Packages	Qty/Kg	Packages	Qty/Kg
Leaf	45,415	2,447,869	45,602	2,493,849	37,127	2,001,145	40,530	2,215,775
Dust	8,000	431,200	7,123	391,124	6,727	362,585	6,988	383,576
Total	53,415	2,879,069	52,725	2,884,973	43,854	2,363,731	47,518	2,599,351

Chittagong Auction Average: Sale 36
Season 2019/20: Tk. 157.93, Season 2018/19: Tk. 204.61

Chittagong Auction Weekly Average



Chittagong Auction Statistics - Sale: 36
Quantities of Teas Sold & Average Prices Realised

Category	For the Sale						Up-to-Date Sale					
	Season 2018/19		Season 2019/20		Season 2018/19		Season 2019/20		(+/-) Season 2018/19			
	Qty. (Kg)	Taka	Qty. (Kg)	Taka	Qty. (Kg)	(%)	Taka	Qty. (Kg)	(%)	Taka	Qty. (Kg)	Taka
CTC LEAF	1,690,885.5	197.42	1,660,001.0	149.15	55,429,864.2	81.1%	269.62	61,102,868.5	81.7%	185.50	5,673,004.3	-84.12
CTC DUST	318,131.5	242.83	386,658.8	195.61	12,553,309.2	18.4%	276.54	13,343,168.0	17.8%	198.71	789,858.8	-77.83
Sub-Total	2,009,017.0	204.61	2,046,659.8	157.93	67,983,173.4	99.4%	270.90	74,446,036.5	99.5%	187.87	6,462,863.1	-83.03
ORTHODOX	0.0	0.00	0.0	0.00	1,013.5	0.0%	545.30	297.5	0.0%	236.77	-716.0	-308.53
Total	2,009,017.0	204.61	2,046,659.8	157.93	67,984,186.9	99.4%	270.90	74,446,334.0	99.5%	187.87	6,462,147.1	-83.03
GREEN TEA	0.0	0.00	74.5	1,000.00	0.0	0.0%	0.00	3,721.0	0.0%	496.02	3,721.0	496.02
Total	2,009,017.0	204.61	2,046,734.3	157.96	67,984,186.9	99.4%	270.90	74,450,055.0	99.5%	187.89	6,465,868.1	-83.02
Other (s)	820.0	116.01	4,970.9	99.39	377,976.0	0.6%	210.82	377,923.5	0.5%	80.53	-52.5	-130.29
G.Total	2,009,837.0	204.58	2,051,705.2	157.82	68,362,162.9	100%	270.57	74,827,978.5	100%	187.34	6,465,815.6	-83.23

Buyer Purchase Analysis

Buyer	For the Sale						Up-to-Date Sale					
	Season 2018/19		Season 2019/20		Season 2018/19		Season 2019/20		(+/-) Season 2018/19			
	Qty. (Kg)	Taka	Qty. (Kg)	Taka	Qty. (Kg)	(%)	Taka	Qty. (Kg)	(%)	Taka	Qty. (Kg)	Taka
Export	549.2	255.00	21,341.5	93.27	23,321.4	0.03%	265.41	253,316.2	0.34%	105.06	229,994.8	-160.35
Internal	2,009,287.8	204.56	2,030,363.7	158.50	68,338,841.5	99.97%	270.57	74,574,662.3	99.66%	187.62	6,235,820.8	-82.95
Grand Total	2,009,837.0	204.58	2,051,705.2	157.82	68,362,162.9	100%	270.57	74,827,978.5	100%	187.34	6,465,815.6	-83.23

Crop of Major Tea Producing & Exporting Countries

Country	Month	For the Month			Up-to-Date		
		2018	2019	(+/-) 2018	2018	2019	(+/-) 2018
Malawi	December	6.4	5.0	-1.4	50.6	48.2	-2.4
Bangladesh *	December	6.3	6.4	0.2	82.1	96.1	13.9
North India	November	101.5	117.6	16.1	1078.0	1121.7	43.7
South India	November	19.6	21.8	2.2	205.1	200.9	-4.2
All India	November	121.1	139.4	18.3	1283.1	1322.6	39.5
Sri Lanka	November	24.7	21.9	-2.8	277.6	278.1	0.5
Kenya	November	45.6	45.1	-0.5	441.2	408.2	-33.0

* Source: Bangladesh Tea Board's Monthly Statistical Bulletin

General + Other Market(s) This/Last Week

KOLKATA SALE 03- 14TH/15TH & 16TH JANUARY, 2020

There was good demand for good liquoring Assams & fair demand for the remainder. Good liquoring Assams were barely steady to easier. Other varieties were irregularly easier with browner, plainer liquoring & fibrous sorts further discounted. Clean, well-made Dooars were barely steady. M/s Tata Global Beverages was active on medium Assams & plainest Dooars in the leaf sale & operated on a spectrum of the Dust offerings. Western India showed interest only on good liquoring descriptions. Export accounts were active on larger Brokens & some Fannings. Regional packeteers operated in both markets. In the leaf sale they were more active on plainest Dooars. Local buyers were active on the Dooars.

Tea Category USC/KG	Brokens	Fannings	Dusts
BEST ASSAMS	267-296	267-282	310-324
GOOD ASSAMS	225-253	225-253	267-296
MED ASSAMS	183-211	183-211	197-239
BEST DOOARS	253-282	253-267	218-239
GOOD- MED DOOARS	183-225	183-225	176-204
PLAINER DOOARS	113-155	113-155	113-155

COONOOR SALE 03- 18TH JANUARY, 2020

The third week auction of 2020 in Coonoor saw a reduced demand from all sections of the trade across the range of teas. The best liquoring sorts continued to meet with selective demand. The good and the better medium teas saw some quantum of withdrawals due to want of bids. The medium category bolder and Fannings were barely steady whilst others grades eased. The plainer teas too met with fair enquiry at easier levels. The regional buyers continued to be choosy. The other Internal buyers were less active. The Exporters improved buying but at lower levels on the medium and plainer categories.

CTC Leaf(USC/KG)	Best	Good	Better Med	Regular Med	Plain
	172-211	123-165	112-121	99-109	90-95

SILIGURI SALE 03- 15TH JANUARY, 2020

LEAF: Fair demand. Good/best & better medium category followed quality & tended easier. Plainer sorts sold readily at irregular & easier levels. DUST: Good demand at easier levels. Internal- Active, Blenders- Operated. Exporter- Selective.

Quotations (USC/KG)	Brokens(USC/kg)	Fannings(USC/kg)	Dust (USC/kg)
GOOD / BEST	218-282	204-274	197-253
MEDIUM / BETTER MEDIUM	162-211	162-197	155-190
COMMON / BLF	99-155	99-155	99-148

MOMBASA SALE 02- 13TH/14TH JANUARY, 2020

There was less demand for the 175,264 packages (11,584,786.50 kilos) on offer at irregular rates with 15.66% remaining unsold.

CTC QUOTATIONS	BP1 – USC	PF1 – USC	PD – USC	D1 – USC
Best	238 – 624	278 – 332	272 – 336	284 – 332
Good	180 – 322	270 – 302	270 – 317	278 – 316
Good Medium	230 – 276	256 – 287	258 – 278	256 – 308
Medium	190 – 240	220 – 282	200 – 258	215 – 274
Lower Medium	125 – 188	150 – 226	107 – 206	100 – 208
Plainer	090 – 150	088 – 186	080 – 186	080 – 182