

# NATIONAL BROKERS LIMITED

<http://nationalbrokersbd.com/>

**Tea Auctioneers since 1948**

## TEA MARKET REPORT – Sale 40 held on Tuesday 11<sup>th</sup> February, 2020

CTC LEAF: 50,282 packages of Current Season teas on offer met with less demand at lower rates. Withdrawals were again heavy.

BROKENS: A negligible weight of clean Brokens met with a fairly strong interest and were about firm. Other Brokens met with a discriminating market and majority were discounted heavily. There were also heavier withdrawals in these categories. Poorest types attracted fair interest from buyers and were steady. There were several withdrawals.

FANNINGS: Here again there were only a few clean types available which met with a fairly strong interest and were about firm to occasionally dearer. Others were in much less demand and were discounted heavily with more withdrawals. However, poor types witnessed fair interest at lower prices.

CTC DUST: 8,233 packages of Current Season teas and 10 packages of Old Season teas on offer met with less demand. Good and Medium liquoring teas met with a fair demand. Plain and BLF teas were easier by Tk.10/- to Tk.15/- with several withdrawals. Blenders were fairly active. Loose tea buyers were very selective.

COMMENTS: There was a larger weight of poorer teas on offer this week which met with a discriminating market. Blenders lent fair support at generally lower levels whilst Loose tea buyers operated in greater strength at the lower end of the market. Pakistan buyers showed a little more interest, However, withdrawals continued to be heavy. Dusts met with less demand than last.

**Our catalogue (Sale 40): Avg: Tk 123.56 Sold 44.7% & (Sale 39) Avg: Tk 145.75, sold 47.3%.**

### Quotations – This Week – (In Taka)

Brokens	This Week	Last Week	Fannings	This week	Last Week	Dust	This week	Last Week
Large	90-110	120-130 nom	Best	180-190 nom	185-200 nom	PD	103-260	117-208
Medium	105-120	120-135	Good	140-150	155-165	RD	88-220	110-255
Small	110-130	130-145	Medium	115-125	125-135	D	83-250	112-270
Plain	85-105	90-115	Plain	85-105	90-115	CD	125-239	151-276
BLF	90-130	95-130	BLF	90-130	95-130	BLF	Nil	117-139

(BLF- Bought Leaf Factory)

Exchange Rates 11<sup>th</sup> February, 2020 Sterling Pound: Tk.107.7509, dollar: Tk. 83.9500

### Top Prices – This Week

Category – CTC	Garden	Grade	Package	Price	Buyer(s)
Brokens	Rangapani a/c Ellahinoor	BOP	10	207/-	Tar
Fannings	Madhupur	PF	10	228/-	Shawon
Clonal Brokens	Kaiyacherra Dalu	GBOP	11	296/-	Shati
Clonal Fannings	Kaiyacherra Dalu	OF	10	319/-	Shati
PD/RD (Incl Clone)	Clevedon	PD	10	260/-	TS
D (Incl Clone)	* Daragaon	D	20	250/-	Shawon
CD (Incl Clone)	Madhupur	CD(BT1)	10	250/-	Al-Amin

\* Above price(s) realised in our catalogue

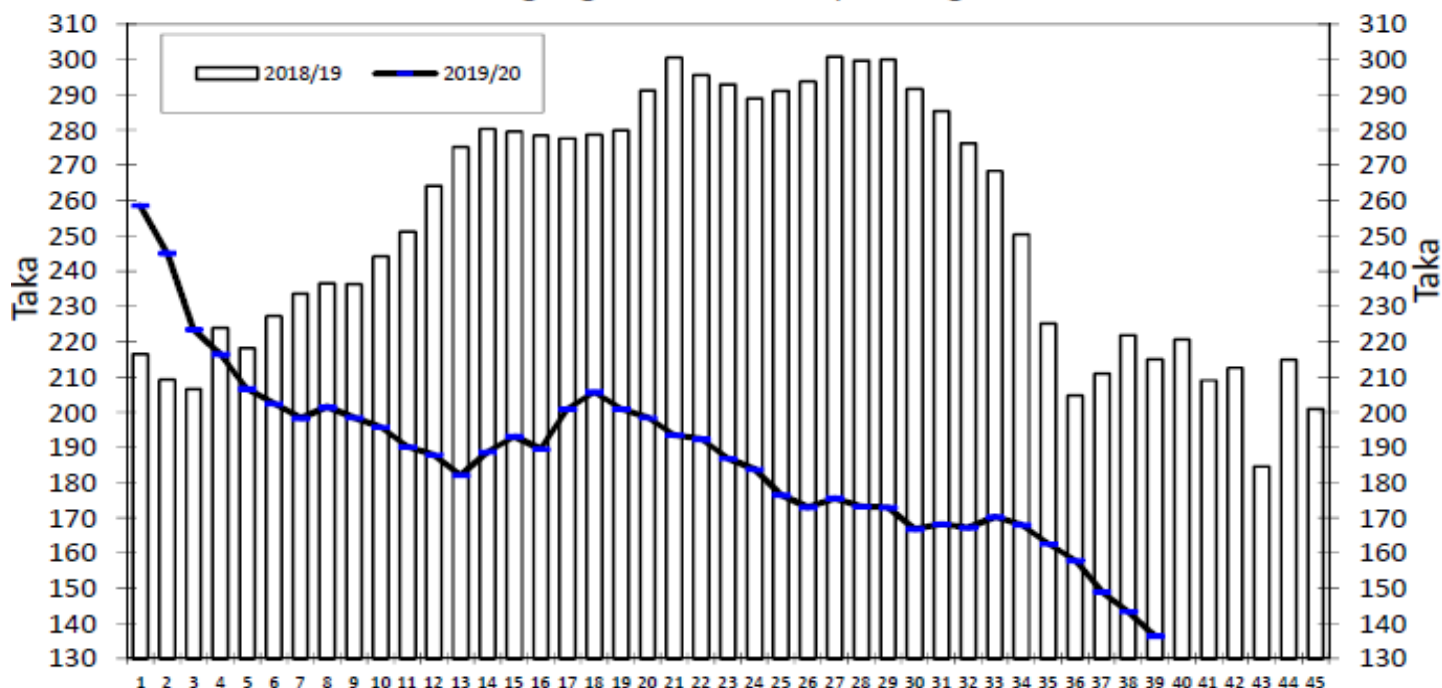
### Offerings

Type	This Sale ( Sale 40 )				Next Sale ( Sale 41 )			
	Season 2019-2020		Season 2018-2019		Season 2019-2020		Season 2018-2019	
	Packages	Qty/Kg	Packages	Qty/Kg	Packages	Qty/Kg	Packages	Qty/Kg
Leaf	50,282	2,746,524	31,765	1,734,369	32,802	1,790,989	25,785	1,409,974
Dust	8,243	452,293	7,184	392,246	5,513	301,010	6,752	370,645
Total	58,525	3,198,817	38,949	2,126,615	38,315	2,091,999	32,537	1,780,619

Chittagong Auction Average: Sale 39

Season 2019/20: Tk. 136.46 & Season 2018/19: Tk. 215.05

### Chittagong Auction Weekly Average



Weekly Sale

**Chittagong Auction Statistics - Sale: 39**  
Quantities of Teas Sold & Average Prices Realised

Category	For the Sale				Up-to-Date Sale									
	Season 2018/19		Season 2019/20		Season 2018/19				Season 2019/20				(+/-) Season 2018/19	
	Qty. (Kg)	Taka	Qty. (Kg)	Taka	Qty. (Kg)	(%)	Taka	Qty. (Kg)	(%)	Taka	Qty. (Kg)	Taka		
CTC LEAF	1,167,217.0	211.62	1,534,227.0	128.93	60,234,458.7	81.3%	264.99	65,164,723.5	81.7%	182.33	4,930,264.8	-82.65		
CTC DUST	255,340.3	230.72	288,159.0	176.61	13,412,958.6	18.1%	274.17	14,207,774.6	17.8%	197.73	794,816.0	-76.44		
Sub-Total	1,422,557.3	215.05	1,822,386.0	136.46	73,647,417.3	99.5%	266.66	79,372,498.1	99.5%	185.09	5,725,080.8	-81.57		
ORTHODOX	0.0	0.00	0.0	0.00	1,013.5	0.0%	545.30	297.5	0.0%	236.77	-716.0	-308.53		
Total	1,422,557.3	215.05	1,822,386.0	136.46	73,648,430.8	99.5%	266.66	79,372,795.6	99.5%	185.09	5,724,364.8	-81.57		
GREEN TEA	0.0	0.00	74.5	1,000.00	0.0	0.0%	0.00	3,795.5	0.0%	505.91	3,795.5	505.91		
Total	1,422,557.3	215.05	1,822,460.5	136.50	73,648,430.8	99.5%	266.66	79,376,591.1	99.5%	185.10	5,728,160.3	-81.56		
Other (s)	6,570.0	152.06	1,095.5	125.00	395,663.0	0.5%	207.57	380,664.5	0.5%	80.62	-14,998.5	-126.95		
G.Total	1,429,127.3	214.76	1,823,556.0	136.49	74,044,093.8	100%	266.35	79,757,255.6	100%	184.61	5,713,161.8	-81.75		

**Buyer Purchase Analysis**

Buyer	For the Sale				Up-to-Date Sale									
	Season 2018/19		Season 2019/20		Season 2018/19				Season 2019/20				(+/-) Season 2018/19	
	Qty. (Kg)	Taka	Qty. (Kg)	Taka	Qty. (Kg)	(%)	Taka	Qty. (Kg)	(%)	Taka	Qty. (Kg)	Taka		
Export	0.0	0.00	50,083.5	81.11	23,321.4	0.03%	265.41	403,279.7	0.51%	97.02	379,958.3	-168.39		
Internal	1,429,127.3	214.76	1,773,472.5	138.06	74,020,772.4	99.97%	266.35	79,353,975.9	99.49%	185.05	5,333,203.5	-81.30		
Grand Total	1,429,127.3	214.76	1,823,556.0	136.49	74,044,093.8	100%	266.35	79,757,255.6	100%	184.61	5,713,161.8	-81.75		

**Crop of Major Tea Producing & Exporting Countries**

Country	Month	For the Month			Up-to-Date		
		2018	2019	(+/-) 2018	2018	2019	(+/-) 2018
Bangladesh *	December	6.3	6.4	0.2	82.1	96.1	13.9
Malawi	December	6.4	5.0	-1.4	50.6	48.2	-2.4
North India	December	35.8	48.9	13.1	1113.7	1170.7	57.0
South India	December	19.7	18.1	-1.6	224.9	219.0	-5.9
All India	December	55.5	67.0	11.5	1338.6	1389.7	51.1
Sri Lanka	December	26.0	22.0	-4.0	303.9	300.1	-3.8
Kenya	December	51.8	50.7	-1.2	493.0	458.9	-34.2

\* Source: Bangladesh Tea Board's Monthly Statistical Bulletin

## General + Other Market(s) This/Last Week

### KOLKATA SALE 06 – 4<sup>TH</sup> /5<sup>TH</sup> & 6<sup>TH</sup> FEBRUARY, 2020

CTC: There was fair general demand for Assams at irregularly easier rates. Teas which showed a seasonal decline in quality met with lower interest and faced withdrawals. Dooars followed a similar trend and met with fair demand at easier levels with poorer sorts facing withdrawals. There was useful support from export accounts, mostly on the bolder Brokens. Western India segments were selective on better liquoring sorts. Regional packeteers operated, primarily on plainer varieties including plainest Dooars. Local buyers operated on the Dooars.

Tea Category USC/KG	Brokens	Fannings	Dusts
BEST ASSAMS	267-295	253-281	281-309
GOOD ASSAMS	211-239	211-225	239-267
MED ASSAMS	183-211	183-197	183-211
BEST DOOARS	239-253	225-239	211-225
GOOD- MED DOOARS	183-211	183-211	169-197
PLAINER DOOARS	113-155	113-155	113-155

### COONOOR SALE 06- 8<sup>TH</sup> FEBRUARY, 2020

Selective demand witnessed this week. The brighter liquoring teas met good demand at irregular and lower prices. The good and the better medium bolders had a fair enquiry along with the corresponding Fanning's which too met fair demand, whilst other grades in this category continue to struggle and suffered withdrawals. Plainer teas sold readily at last or a couple of rupees lower than last. Brighter liquoring sorts irregular at last levels. Good and Better Medium bolder's and Fanning's barely steady. Other grades depreciated by Rs 3 to Rs 4 with larger volumes out listed due to want of bids. Plainer, cleaner varieties at last other browner fibrous teas easier by upto Rs. 2. Major Blender continues to purchase larger weight compared to others. The regional buyers subdued in their buying this week. The internal buyers very selective and price sensitive. The Exporters operated selectively on the medium and plainer teas.

CTC	Best	Good	Better Med	Regular Med	Plain
Leaf(USC/KG)	183-238	106-163	99-104	96-97	90-95

### SILIGURI SALE 06- 5<sup>TH</sup> FEBRUARY, 2020

Good general demand. Levels for all sorts eased irregularly following seasonal drop in quality with some withdrawals. Select well made sorts were well competed for. DUST: Good demand at easier levels.

Quotations (USC/KG)	Brokens(USC/kg)	Fannings(USC/kg)	Dust (USC/kg)
GOOD / BEST	211-267	204-260	183-239
MEDIUM / BETTER MEDIUM	155-204	155-197	148-176
COMMON / BLF	99-148	99-148	99-148

### MOMBASA SALE 05- 27<sup>th</sup> & 28<sup>th</sup> JANUARY, 2020

Fairly good demand at irregularly easier rates for the 212,580 packages (13,962,817.00 kilos) on offer with (14.74%) remaining unsold.

CTC QUOTATIONS	BP1 – USC	PF1 – USC	PD – USC	D1 – USC
Best	220 – 614	274 – 343	266 – 344	268 – 350
Good	208 – 304	266 – 294	264 – 294	262 – 301
Good Medium	200 – 280	254 – 288	260 – 270	248 – 298
Medium	198 – 230	205 – 274	230 – 260	220 – 278
Lower Medium	120 – 190	150 – 222	110 – 202	120 – 202
Plainer	090 – 156	068 – 190	056 – 180	080 – 180