

# NATIONAL BROKERS LIMITED

<http://nationalbrokersbd.com/>

**Tea Auctioneers since 1948**

## TEA MARKET REPORT – Sale 41 held on Monday 17<sup>th</sup> February, 2020

CTC LEAF: 32,702 packages of Current Season teas on offer met with much less demand and again with heavy withdrawals.

BROKENS: There were only a few lines of clean Broken which sold fairly well around steady rates and were about steady whilst all others met with a very selective demand and mostly were sold except the plainest and poor types which were in fair demand but again at lower rates. There were again quite heavy withdrawals.

FANNINGS: A handful of clean Fannings sold well although often at lower rates but other varieties were generally neglected with quite heavy withdrawals. However, the plainest and the poor types attracted some interest but sold at much lower rates.

CTC DUST: 5,496 packages of Current Season teas on offer met with less demand. Good and Medium liquoring teas met with a fair demand. Plain and BLF teas were easier by Tk.12/- to Tk.18/- with several withdrawals. Blenders were selective. Loose tea buyers were very selective.

COMMENTS: This sale took place in Srimangal. The quality was mostly end of season which was much less in demand particularly from the Blenders. Loose tea buyers, however, were fairly active on the cheapest teas on offer. There was some interest from Pakistan buyers but again at lower rates. Withdrawals continued to be very heavy. Dusts met with less demand.

**Our catalogue (Sale 41): Avg: Tk 105.93, Sold 58.8% & ( Sale 40 ) Avg: Tk 123.82, sold 48.8%.**

### Quotations – This Week – (In Taka)

Brokens	This Week	Last Week	Fannings	This week	Last Week	Dust	This week	Last Week
Large	75-90	90-110	Best	180-190 nom	180-190 nom	PD	93-173	103-260
Medium	90-110	105-120	Good	135-150	140-150	RD	99-242	88-220
Small	110-130	110-130	Medium	105-120	115-125	D	105-250	83-250
Plain	75-90	85-105	Plain	75-90	85-105	CD	124-262	125-239
BLF	90-130	90-130	BLF	90-130	90-130	BLF	Nil	Nil

(BLF- Bought Leaf Factory)

Exchange Rates 17<sup>th</sup> February, 2020 Sterling Pound: Tk.108.5386 dollar: Tk. 83.6702

### Top Prices – This Week

Category – CTC	Garden	Grade	Package	Price	Buyer(s)
Brokens	* Madhupur	GBOP(S)	10	259/-	GT
Fannings	* Madhupur	PF	10	226/-	Aftab
Clonal Brokens	* Madhupur	GBOP(BT1)	10	285/-	Sapta
Clonal Fannings	* Madhupur	PF(BT1)	10	235/-	GT
PD/RD (Incl Clone)	* Madhupur	RD	10	242/-	Shawon
D (Incl Clone)	* Daragaon	D	20	250/-	Maria
CD (Incl Clone)	* Madhupur	CD(BT1)	10	262/-	Maria

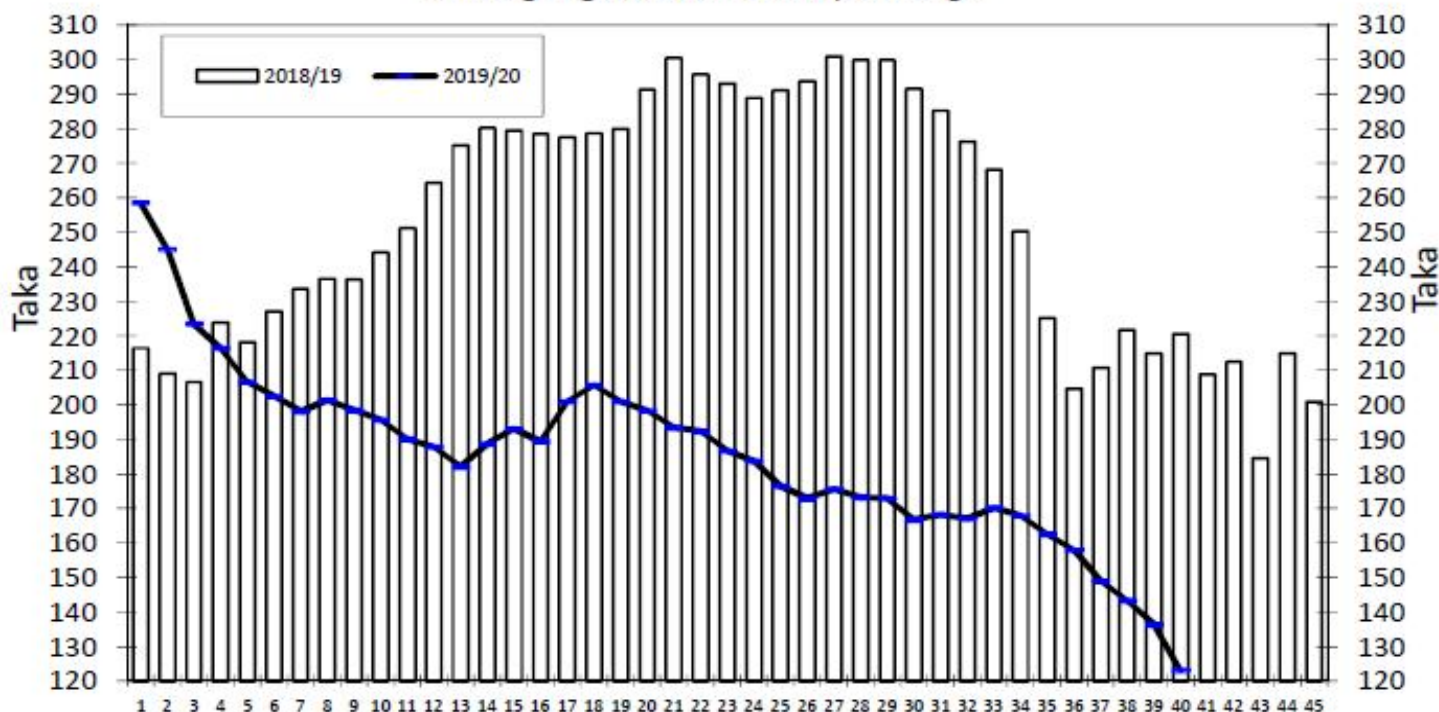
\* Above price(s) realised in our catalogue

### Offerings

Type	This Sale ( Sale 41 )				Next Sale ( Sale 42 )			
	Season 2019-2020		Season 2018-2019		Season 2019-2020		Season 2018-2019	
	Packages	Qty/Kg	Packages	Qty/Kg	Packages	Qty/Kg	Packages	Qty/Kg
Leaf	32,702	1,788,669	25,785	1,409,974	56,636	3,097,989	21,588	1,182,289
Dust	5,496	301,097	6,752	370,645	7,856	429,723	3,819	209,554
Total	38,198	2,089,765	32,537	1,780,619	64,492	3,527,712	25,407	1,391,843

Chittagong Auction Average: Sale 40  
Season 2019/20: Tk. 123.11 & Season 2018/19: Tk. 220.65

### Chittagong Auction Weekly Average



Weekly Sale

**Chittagong Auction Statistics - Sale: 40**  
Quantities of Teas Sold & Average Prices Realised

Category	For the Sale						Up-to-Date Sale					
	Season 2018/19		Season 2019/20		Season 2018/19		Season 2019/20		(+/-) Season 2018/19			
	Qty. (Kg)	Taka	Qty. (Kg)	Taka	Qty. (Kg)	(%)	Taka	Qty. (Kg)	(%)	Taka	Qty. (Kg)	Taka
CTC LEAF	1,346,747.0	219.19	1,621,633.5	118.43	61,562,543.2	81.3%	263.95	66,786,357.0	81.8%	180.78	5,223,813.8	-83.16
CTC DUST	318,421.2	226.83	245,143.5	154.04	13,731,379.8	18.1%	273.07	14,452,918.1	17.7%	196.99	721,538.3	-76.08
Sub-Total	1,665,168.2	220.65	1,866,777.0	123.11	75,293,923.0	99.4%	265.61	81,239,275.1	99.5%	183.66	5,945,352.1	-81.94
ORTHODOX	0.0	0.00	0.0	0.00	1,013.5	0.0%	545.30	297.5	0.0%	236.77	-716.0	-308.53
Total	1,665,168.2	220.65	1,866,777.0	123.11	75,294,936.5	99.4%	265.61	81,239,572.6	99.5%	183.67	5,944,636.1	-81.95
GREEN TEA	0.0	0.00	99.0	1,000.00	18,662.5	0.0%	400.00	3,894.5	0.0%	518.47	-14,768.0	118.47
Total	1,665,168.2	220.65	1,866,876.0	123.16	75,313,599.0	99.4%	265.65	81,243,467.1	99.5%	183.68	5,929,868.1	-81.96
Other (s)	11,494.5	191.64	548.4	105.00	407,157.5	0.5%	208.09	381,212.9	0.5%	80.65	-25,944.6	-127.44
G.Total	1,676,662.7	220.45	1,867,424.4	123.15	75,720,756.5	100%	265.34	81,624,680.0	100%	183.20	5,903,923.5	-82.14

**Buyer Purchase Analysis**

Buyer	For the Sale				Up-to-Date Sale				(+/-) Season 2018/19			
	Season 2018/19		Season 2019/20		Season 2018/19		Season 2019/20					
	Qty. (Kg)	Taka	Qty. (Kg)	Taka	Qty. (Kg)	(%)	Taka	Qty. (Kg)	(%)	Taka	Qty. (Kg)	Taka
Export	0.0	0.00	166,653.5	89.68	23,321.4	0.03%	265.41	569,933.2	0.70%	94.87	546,611.8	-170.54
Internal	1,676,662.7	220.45	1,700,770.9	126.43	75,697,435.1	99.97%	265.34	81,054,746.8	99.30%	183.82	5,357,311.7	-81.52
Grand Total	1,676,662.7	220.45	1,867,424.4	123.15	75,720,756.5	100%	265.34	81,624,680.0	100%	183.20	5,903,923.5	-82.14

**Crop of Major Tea Producing & Exporting Countries**

Country	Month	For the Month			Up-to-Date		
		2018	2019	(+/-) 2018	2018	2019	(+/-) 2018
Bangladesh *	December	6.3	6.4	0.2	82.1	96.1	13.9
Malawi	December	6.4	5.0	-1.4	50.6	48.2	-2.4
North India	December	35.8	48.9	13.1	1113.7	1170.7	57.0
South India	December	19.7	18.1	-1.6	224.9	219.0	-5.9
All India	December	55.5	67.0	11.5	1338.6	1389.7	51.1
Sri Lanka	December	26.0	22.0	-4.0	303.9	300.1	-3.8
Kenya	December	51.8	50.7	-1.2	493.0	458.9	-34.2

\* Source: Bangladesh Tea Board's Monthly Statistical Bulletin

## General + Other Market(s) This/Last Week

### KOLKATA SALE 07- 11<sup>TH</sup>, 12<sup>TH</sup> & 13<sup>TH</sup> FEBRUARY, 2020

CTC Leaf: There was only fair demand for Assams on offer at easier levels. Teas which showed a seasonal decline in quality met with less demand and faced substantial withdrawals. Dooars met with fair demand at easier levels with poorer sorts getting discounted. CTC Dust: There was better demand than the leaf market. Assam sold at easier levels. The nominal weight of Dooars on offer also sold at easier levels closely following quality. M/s Hindustan Unilever & M/s Tata Global Beverages operated in the leaf & dust markets on a cross-section of the offerings. There was useful support from export accounts, mostly on the bolder Brokens. Western India segments operated with more interest on better liquoring sorts. Regional packeteers operated primarily on plainer varieties including plainest Dooars. Local buyers operated on the Dooars.

Tea Category USC/KG	Brokens	Fannings	Dusts
BEST ASSAMS	252-280	238-259	238-280
GOOD ASSAMS	210-238	196-224	210-224
MED ASSAMS	168-196	168-189	168-196
BEST DOOARS	224-238	210-224	196-210
GOOD- MED DOOARS	168-210	168-196	154-182
PLAINER DOOARS	98-154	98-154	98-154

### SILIGURI SALE 07- 12<sup>TH</sup> FEBRUARY, 2020

LEAF: Good general demand. Levels across all segments were generally easier with end season varieties seeing less enquiry. Cleaner and liquoring reprints were well competed for.

Quotations (USC/KG)	Brokens(USC/kg)	Fannings(USC/kg)	Dust (USC/kg)
GOOD / BEST	203-266	203-259	182-238
MEDIUM / BETTER MEDIUM	154-196	154-196	147-175
COMMON / BLF	91-147	91-147	91-140

### COONOOR SALE 07- 14<sup>TH</sup> FEBRUARY, 2020

Only 48.78 % of the leaf grades sold in a weak or rather a sagging market today. Enquiry for the brighter liquoring teas were stable as last. Demand for the good and the better medium depleted with quantum of teas remaining unsold, however select bolder and Fanning's grade in this category met with fair demand. Plainer teas too saw a southward trend. Brighter liquoring teas sold at steady to easier levels. Good, better medium and medium met downtrend by up to Rs 5 or more amidst weak demand and is piled up with larger volume of teas barring select bolder and fanning's grades, which were barely steady. Plainer varieties irregularly lower at last levels. Major Blender selective. The regional buyers continued to be subdued. The Internal buyers very rather quiet. The Exporters operated selectively on the medium and plainer teas.

CTC Leaf(USC/KG)	Best	Good	Better Med	Regular Med	Plain
	182-234	104-163	96-104	93-94	89-91

### MOMBASA SALE 06- 10<sup>TH</sup> & 12<sup>TH</sup> FEBRUARY, 2020

There was fairly good demand for the 189,950 packages (12,504,245.00 kilos) available at irregular levels. 13.71% were unsold.

CTC QUOTATIONS	BP1 – USC	PF1 – USC	PD – USC	D1 – USC
Best	208 – 580	224 – 336	240 – 328	252 – 314
Good	192 – 292	252 – 288	246 – 294	244 – 296
Good Medium	190 – 230	246 – 278	235 – 265	240 – 279
Medium	190 – 260	220 – 262	225 – 263	224 – 263
Lower Medium	107 – 182	130 – 206	100 – 196	110 – 206
Plainer	100 – 157	068 – 193	056 – 176	080 – 188