

NATIONAL BROKERS LIMITED

<http://nationalbrokersbd.com/>

Tea Auctioneers since 1948

TEA MARKET REPORT – Sale 42 held on Tuesday 25th February, 2020

CTC LEAF: 56,383 packages of Current Season & 36 packages of Old Season Teas on offer met with a better demand.

BROKENS: All clean Brokens met with a much improved demand and generally sold at firm to slightly dearer rates. A few clean liquoring types met with a strong feature and were appreciably dearer following competition. Plain and poor varieties met with a fair competition and generally sold firm rates. However, there were some withdrawals.

FANNINGS: A few best liquoring invoices on offer met with a strong demand and were dearer whilst all others were easier following quality. There were also fair withdrawals. Plain and poor types witnessed fair demand and were slightly easier. There were again withdrawals in this category.

CTC DUST: 7,858 packages of Current Season teas on offer met with a fair demand. Good and Medium

liquoring teas met with a fair demand. Plain and BLF teas were easier by Tk.5/- to Tk.10/- with several withdrawals. Blenders were selective. Loose tea buyers were very selective. Good liquoring CDs met with a strong demand.

COMMENTS: There was a larger weight of tea on offer in this sale which again comprised of mostly end of season varieties. However, there was more activity from all sections of the market. Blenders were active for a wide range of teas whilst there was more interest from the Loose tea buyers. Pakistan buyers stepped up their buying at slightly improved rates. As a result, withdrawals were generally less.

Dusts met with a fair demand.

Our catalogue (Sale 42): Avg: Tk 106.74, Sold 59.8% & (Sale 41) Avg: Tk 106.83, sold 51.0%.

Quotations – This Week – (In Taka)

Brokens	This Week	Last Week	Fannings	This week	Last Week	Dust	This week	Last Week
Large	80-95	75-90	Best	185-195	180-190 nom	PD	124-141	93-173
Medium	90-115	90-110	Good	145-165	135-150	RD	93-265	99-242
Small	105-130	110-130	Medium	100-115	105-120	D	90-250	105-250
Plain	80-90	75-90	Plain	80-90	75-90	CD	140-166	124-262
BLF	95-130	90-130	BLF	95-130	90-130	BLF	113	Nil

(BLF- Bought Leaf Factory)

Exchange Rates 25th February, 2020 Sterling Pound: Tk. 107.9802 dollar: Tk. 83.6702

Top Prices – This Week

Category – CTC	Garden	Grade	Package	Price	Buyer(s)
Brokens	* Madhupur	GBOP	10	258/-	Mintu
Fannings	Madhupur	PF	10	291/-	BC
Clonal Brokens	Madhupur	GBOPS	10	361/-	Kalam
Clonal Fannings	Clevedon	OF	10	339/-	HTS
PD/RD (Incl Clone)	Clevedon	PD	10	265/-	Alamin
D (Incl Clone)	* Daragaon	D	20	250/-	Shawon
CD (Incl Clone)	* Madhupur	CD(BT1)	10	266/-	Shaw Wallace

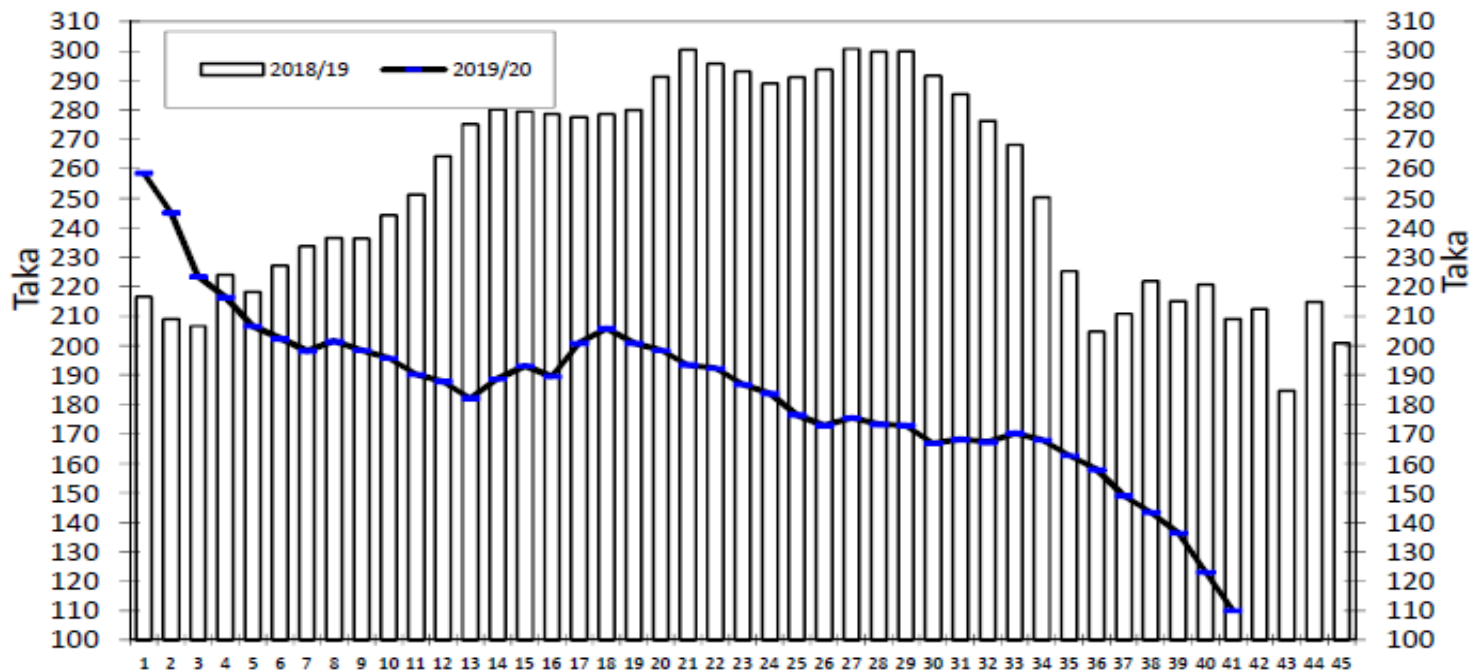
* Above price(s) realised in our catalogue

Offerings

Type	This Sale (Sale 42)				Next Sale (Sale 43)			
	Season 2019-2020		Season 2018-2019		Season 2019-2020		Season 2018-2019	
	Packages	Qty/Kg	Packages	Qty/Kg	Packages	Qty/Kg	Packages	Qty/Kg
Leaf	56,419	3,087,729	21,588	1,182,289	30,887	1,689,519	4,367	238,194
Dust	7,858	430,858	3,819	209,554	4,364	238,711	726	39,811
Total	64,277	3,518,588	25,407	1,391,843	35,251	1,928,230	5,093	278,005

Chittagong Auction Average: Sale 41
Season 2019/20: Tk. 110.08 & Season 2018/19: Tk. 208.93

Chittagong Auction Weekly Average



Weekly Sale

Chittagong Auction Statistics - Sale: 41
Quantities of Teas Sold & Average Prices Realised

Category	For the Sale						Up-to-Date Sale					
	Season 2018/19		Season 2019/20		Season 2018/19		Season 2019/20		(+/-) Season 2018/19			
	Qty. (Kg)	Taka	Qty. (Kg)	Taka	Qty. (Kg)	(%)	Taka	Qty. (Kg)	(%)	Taka	Qty. (Kg)	Taka
CTC LEAF	1,157,889.5	209.56	1,249,208.0	104.51	62,720,432.7	81.3%	262.94	68,035,565.0	81.9%	179.38	5,315,132.3	-83.56
CTC DUST	304,459.2	206.56	174,705.8	149.89	14,035,839.0	18.2%	271.63	14,627,623.9	17.6%	196.43	591,784.9	-75.20
Sub-Total	1,462,348.7	208.93	1,423,913.8	110.08	76,756,271.7	99.4%	264.53	82,663,188.9	99.5%	182.40	5,906,917.2	-82.13
ORTHODOX	0.0	0.00	0.0	0.00	1,013.5	0.0%	545.30	297.5	0.0%	236.77	-716.0	-308.53
Total	1,462,348.7	208.93	1,423,913.8	110.08	76,757,285.2	99.4%	264.53	82,663,486.4	99.5%	182.40	5,906,201.2	-82.14
GREEN TEA	0.0	0.00	0.0	0.00	18,662.5	0.0%	400.00	3,894.5	0.0%	518.47	-14,768.0	118.47
Total	1,462,348.7	208.93	1,423,913.8	110.08	76,775,947.7	99.4%	264.57	82,667,380.9	99.5%	182.41	5,891,433.2	-82.15
Other (s)	0.0	0.00	0.0	0.00	407,157.5	0.5%	208.09	381,212.9	0.5%	80.65	-25,944.6	-127.44
G.Total	1,462,348.7	208.93	1,423,913.8	110.08	77,183,105.2	100%	264.27	83,048,593.8	100%	181.95	5,865,488.6	-82.32

Buyer Purchase Analysis

Buyer	For the Sale				Up-to-Date Sale							
	Season 2018/19		Season 2019/20		Season 2018/19		Season 2019/20		(+/-) Season 2018/19			
	Qty. (Kg)	Taka	Qty. (Kg)	Taka	Qty. (Kg)	(%)	Taka	Qty. (Kg)	(%)	Taka	Qty. (Kg)	Taka
Export	0.0	0.00	245,230.0	82.58	23,321.4	0.03%	265.41	815,163.2	0.98%	91.18	791,841.8	-174.24
Internal	1,462,348.7	208.93	1,178,683.8	115.80	77,159,783.8	99.97%	264.27	82,233,430.6	99.02%	182.85	5,073,646.8	-81.42
Grand Total	1,462,348.7	208.93	1,423,913.8	110.08	77,183,105.2	100%	264.27	83,048,593.8	100%	181.95	5,865,488.6	-82.32

Crop of Major Tea Producing & Exporting Countries

Country	Month	For the Month			Up-to-Date		
		2019	2020	(+/-) 2019	2019	2020	(+/-) 2019
Bangladesh *	January	0.495	0.175	-0.320			
Sri Lanka	January	23.2	21.9	-1.3			

Country	Month	2018			2019		
		2018	2019	(+/-) 2018	2018	2019	(+/-) 2018
Bangladesh *	December	6.3	6.4	0.2	82.1	96.1	13.9
Malawi	December	6.4	5.0	-1.4	50.6	48.2	-2.4
North India	December	35.8	48.9	13.1	1113.7	1170.7	57.0
South India	December	19.7	18.1	-1.6	224.9	219.0	-5.9
All India	December	55.5	67.0	11.5	1338.6	1389.7	51.1
Sri Lanka	December	26.0	22.0	-4.0	303.9	300.1	-3.8
Kenya	December	51.8	50.7	-1.2	493.0	458.9	-34.2

* Source: Bangladesh Tea Board's Monthly Statistical Bulletin

General + Other Market(s) This/Last Week

KOLKATA SALE 08- 18TH /19TH & 20TH FEBRUARY, 2020

CTC Leaf: There was good demand for select good liquoring Assams at irregularly easier rates. The remainder met with fair demand with levels showing an overall decline. Clean, well-made Dooars met with good demand at barely steady rates. M/s Tata Consumer Products was active in the leaf sale, especially on better Assam larger Brokens and secondary grades. They showed some interest on plainest Dooars & operated on brighter liquoring Assams in the Dust sale. M/s Hindustan Unilever was active in the Leaf & Dust sales on better liquoring Assams. Western India accounts were selective on brighter varieties. There was good support from Exporters on better liquoring larger Brokens and well-made Dusts. Local buyers operated on the Dooars & select, clean, well-made descriptions.

Tea Category USC/KG	Brokens	Fannings	Dusts
BEST ASSAMS	251-278	223-251	251-278
GOOD ASSAMS	195-223	195-209	209-237
MED ASSAMS	153-181	139-181	153-181
BEST DOOARS	209-223	202-216	181-195
GOOD- MED DOOARS	167-181	167-181	153-174
PLAINER DOOARS	97-139	97-139	104-139

COONOOR SALE 08- 21ST FEBRUARY, 2020

An appreciable glimpse of improved demand was witnessed initially but depleted as the sale progressed, more so towards the end of the sale. Brighter liquoring sorts witnessed good demand at easier rates. The better medium and medium bolder grades fair demand whilst other grades met subdued demand with heavy withdrawals. The plainer sorts were readily absorbed at easier rates. Brighter sorts irregular and lower by 3-4. Better medium and medium bolder grades irregular around last. Remainder eased by Rs. 2 to 3 with substantial out-lots. The plainer teas were sold at easier rates by Rs. 3 sometimes more. Major Blender selective.

CTC Leaf(USC/KG)	Best	Good	Better Med	Regular Med	Plain
	178-237	97-159	93-96	91-92	88-89

SILIGURI SALE 08- 19TH FEBRUARY, 2020

LEAF: Good demand. Levels across all segments followed quality. Cleaner & Liquoring reprints were well competed for. DUST: Good demand at last levels. Internal- Main stay, Blenders- HUL,DTL operated. Exporters- Selective.

Quotations (USC/KG)	Brokens(USC/kg)	Fannings(USC/kg)	Dust (USC/kg)
GOOD / BEST	195-258	195-237	181-216
MEDIUM / BETTER MEDIUM	146-188	146-188	146-174
COMMON / BLF	84-139	84-139	91-132

MOMBASA SALE 07- 17TH & 18TH FEBRUARY, 2020

Fairly good demand for the 203,459 packages (13,366,655.00 kilos) on offer at irregularly easier levels and 12.54% remained unsold.

CTC QUOTATIONS	BP1 – USC	PF1 – USC	PD – USC	D1 – USC
Best	186 – 610	256 – 346	249 – 326	256 – 332
Good	192 – 268	248 – 288	240 – 286	230 – 290
Good Medium	164 – 220	242 – 272	238 – 272	235 – 270
Medium	198 – 224	200 – 269	210 – 245	204 – 249
Lower Medium	118 – 272	104 – 213	100 – 191	110 – 205
Plainer	090 – 150	056 – 198	056 – 172	055 – 180