

# NATIONAL BROKERS LIMITED

<http://nationalbrokersbd.com/>

**Tea Auctioneers since 1948**

## TEA MARKET REPORT – Sale 44 held on Tuesday 10<sup>th</sup> March, 2020

CTC LEAF: 36,679 packages of Current Season & 55 packages of Old Season teas on offer met with a strong demand at mostly dearer rates.

BROKENS: A small weight of clean Brokens met with a strong demand and were mostly dearer often by Tk.5/- and above. Other varieties also met with a strong demand and were generally dearer by a similar margin. Poor end of season types met with a strong demand and mostly sold at higher rates.

FANNINGS: A nominal quantity of clean Fannings met with a strong demand and were dearer often by upto Tk.10/-. Other types met with a strong demand and mostly sold at dearer prices following quality.

CTC DUST: 8,347 packages of Current Season teas on offer met with a good demand. Good and Medium

liquoring teas met with a good demand whilst CDs met with a strong demand. Plain and BLF teas were easier by Tk.8/- to Tk.10/- with some withdrawals. Blenders were selective. Loose tea buyers were active.

COMMENTS: There was a widespread demand in this week's sale particularly from the Loose tea buyers who operated in greater strength than before. There was also good support from the Blenders especially for the cleaner types on offer. As a result, prices moved up by a fair margin and there were much less withdrawals. CDs met with a fair demand.

**Our catalogue (Sale 44): Avg: Tk 105.25, Sold 80.1%**  
& ( Sale 43 ) Avg: Tk 96.53, sold 63.9%.

### Quotations – This Week – (In Taka)

Brokens	This Week	Last Week	Fannings	This week	Last Week	Dust	This week	Last Week
Large	80-105	70-85	Best	180-200	160-180	PD	80-180	117-140
Medium	90-110	80-100	Good	140-150	130-145	RD	80-284	75-202
Small	90-120	90-110	Medium	95-115	85-95	D	100-173	105-220
Plain	75-85	70-80	Plain	75-85	70-80	CD	163-244	89-99
BLF	75-90 nom	80-95 nom	BLF	75-90 nom	80-95 nom	BLF	NA	89-90

(BLF- Bought Leaf Factory)

Exchange Rates 10<sup>th</sup> March, 2020 Sterling Pound: Tk. 108.6995 dollar: Tk. 83.6702

Top Prices – This Week

Category – CTC	Garden	Grade	Package	Price	Buyer(s)
Brokens	* Madhupur	GBOP	10	306/-	Aftab
Fannings	* Madhupur	PF	10	243/-	Aftab
Clonal Brokens	* Madhupur	GBOP(BT1)	10	328/-	Al-Amin
Clonal Fannings	Clevedon	OF	10	322/-	Rose
PD/RD (Incl Clone)	* Madhupur	RD	10	284/-	AKT
D (Incl Clone)	* Madhupur	D(BT1)	10	219/-	Kamona
CD (Incl Clone)	* Madhupur	CD(BT1)	10	260/-	Mintu

\* Above price(s) realised in

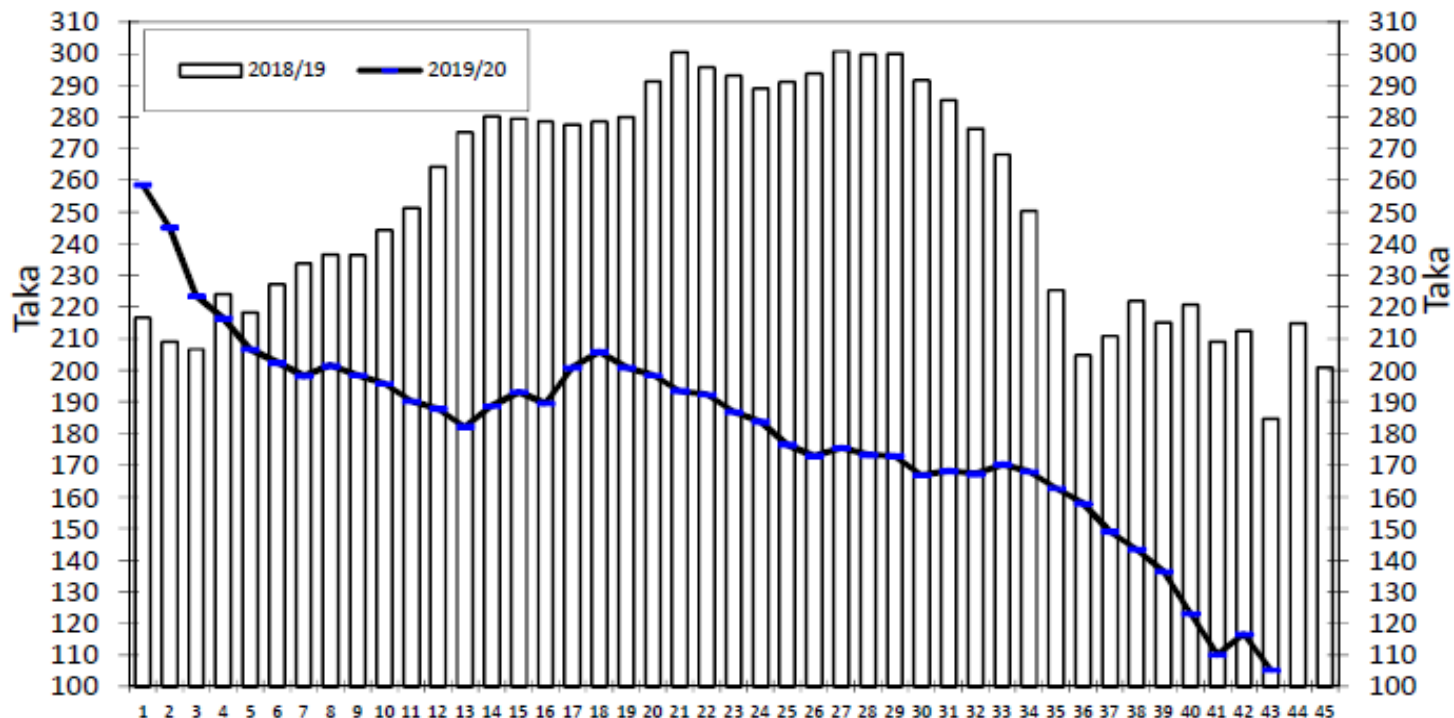
### Offerings

Type	This Sale ( Sale 44 )				Next Sale ( Sale 45 )			
	Season 2019-2020		Season 2018-2019		Season 2019-2020		Season 2018-2019 (Final)	
	Packages	Qty/Kg	Packages	Qty/Kg	Packages	Qty/Kg	Packages	Qty/Kg
Leaf	36,734	2,011,169	14,202	775,167	26,417	1,445,010	8,810	480,496
Dust	8,347	458,006	2,217	121,734	3,738	204,469	706	38,904
Total	45,081	2,469,175	16,419	896,901	30,155	1,649,479	9,516	519,400

Chittagong Auction Average: Sale 43

Season 2019/20: Tk. 105.24 & Season 2018/19: Tk. 184.56

### Chittagong Auction Weekly Average



Weekly Sale

**Chittagong Auction Statistics - Sale: 43**  
Quantities of Teas Sold & Average Prices Realised

Category	For the Sale						Up-to-Date Sale					
	Season 2018/19		Season 2019/20		Season 2018/19		Season 2019/20		(+/-) Season 2018/19			
	Qty. (Kg)	Taka	Qty. (Kg)	Taka	Qty. (Kg)	(%)	Taka	Qty. (Kg)	(%)	Taka	Qty. (Kg)	Taka
CTC LEAF	119,649.0	183.59	1,145,970.5	99.86	63,556,814.7	81.2%	262.19	71,157,379.2	82.1%	176.26	7,600,564.5	-85.93
CTC DUST	29,649.3	188.46	173,838.0	140.70	14,229,886.0	18.2%	270.93	15,074,491.5	17.4%	194.80	844,605.5	-76.13
Sub-Total	149,298.3	184.56	1,319,808.5	105.24	77,786,700.7	99.4%	263.79	86,231,870.7	99.5%	179.50	8,445,170.0	-84.25
ORTHODOX	0.0	0.00	0.0	0.00	1,013.5	0.0%	545.30	297.5	0.0%	236.77	-716.0	-308.53
Total	149,298.3	184.56	1,319,808.5	105.24	77,787,714.2	99.4%	263.79	86,232,168.2	99.5%	179.50	8,444,454.0	-84.25
GREEN TEA	0.0	0.00	74.0	1,000.00	18,662.5	0.02%	400.00	4,042.5	0.0%	536.10	-14,620.0	136.10
Total	149,298.3	184.56	1,319,882.5	105.29	77,806,376.7	99.5%	263.82	86,236,210.7	99.6%	179.52	8,429,834.0	-84.31
Other (s)	273.0	608.19	0.0	0.00	418,069.5	0.5%	209.32	388,618.9	0.4%	80.52	-29,450.6	-128.80
G.Total	149,571.3	185.33	1,319,882.5	105.29	78,224,446.2	100%	263.53	86,624,829.6	100%	179.07	8,400,383.4	-84.46

**Buyer Purchase Analysis**

Buyer	For the Sale				Up-to-Date Sale				(+/-) Season 2018/19			
	Season 2018/19		Season 2019/20		Season 2018/19		Season 2019/20		Taka	Taka		
	Qty. (Kg)	Taka	Qty. (Kg)	Taka	Qty. (Kg)	(%)	Taka	Qty. (Kg)	(%)			
Export	0.0	0.00	175,793.0	78.07	26,064.6	0.03%	267.92	1,179,572.2	1.36%	87.92	1,153,507.6	-179.95
Internal	149,571.3	185.33	1,144,089.5	109.47	78,198,381.6	99.97%	263.53	85,445,257.4	98.64%	180.33	7,246,875.8	-83.20
Grand Total	149,571.3	185.33	1,319,882.5	105.29	78,224,446.2	100%	263.53	86,624,829.6	100%	179.07	8,400,383.4	-84.46

**Crop of Major Tea Producing & Exporting Countries**

Country	Month	For the Month			Up-to-Date		
		2019	2020	(+/-) 2019	2019	2020	(+/-) 2019
Bangladesh *	January	0.495	0.175	-0.320			
North India	January	0.0	0.0	0.0			
South India	January	14.2	16.0	1.8			
All India	January	14.2	16.0	1.8			
Kenya	January	48.4	53.6	5.2			
Sri Lanka	January	23.2	21.9	-1.3			

Country	Month	2018			2019		
		2018	2019	(+/-) 2018	2018	2019	(+/-) 2018
Bangladesh *	December	6.3	6.4	0.2	82.1	96.1	13.9
Malawi	December	6.4	5.0	-1.4	50.6	48.2	-2.4
North India	December	35.8	48.9	13.1	1113.7	1170.7	57.0
South India	December	19.7	18.1	-1.6	224.9	219.0	-5.9
All India	December	55.5	67.0	11.5	1338.6	1389.7	51.1
Sri Lanka	December	26.0	22.0	-4.0	303.9	300.1	-3.8
Kenya	December	51.8	50.7	-1.2	493.0	458.9	-34.2

\* Source: Bangladesh Tea Board's Monthly Statistical Bulletin

## General + Other Market(s) This/Last Week

### KOLKATA SALE 10- 3<sup>RD</sup> & 4<sup>TH</sup> MARCH, 2020

CTC Leaf: There was good demand. Assams were easier except for select brighter invoices of earlier manufacture which at irregular rates with quality. Doors were an easier market with plainest sorts further discounted. CTC Dust: There was good demand. Bulk of the offerings sold at easier rates. M/s Tata Consumer Products was selective. M/s Hindustan Unilever operated on the medium Assams. Western India segments were selective on brighter descriptions. Export accounts operated on larger Brokens. Regional packeteers were active on plainer sorts. Local buyers were active on the Doars.

Tea Category USC/KG	Brokens	Fannings	Dusts
BEST ASSAMS	222-256	215-229	229-256
GOOD ASSAMS	189-202	189-202	195-215
MED ASSAMS	148-175	135-175	148-175
BEST DOOARS	202-215	195-209	175-189
GOOD- MED DOOARS	162-175	162-175	148-168
PLAINER DOOARS	94-135	94-135	101-135

### COONOOR SALE 10- 6<sup>TH</sup> MARCH 2020

The marginal improvement in good demand for the best and good liquoring teas witnessed last week continued this week too. The bolder grades in the medium sorts met fair enquiry whilst the other grades in the category had a marginal surge of interest from all sections of the buyers albeit the prices moved southwards. The plainer teas met with better absorption but at barely steady levels. Brighter sorts sold at irregular levels around last sometimes more but, in line with quality. Select better Medium teas sold at erratic rates. Prices slipped for the medium category teas but however offtake was better compared to previous weeks. The plainer teas were sold at last levels. Major blender and an upcountry packateer were the mainstay of the market. Improved absorption was seen from the Iternal buyers. Exporters were fairly active.

CTC Leaf(USC/KG)	Best	Good	Better Med	Regular Med	Plain
	172-256	105-170	94-104	85-88	81-84

### MOMBASA SALE 09- 2<sup>ND</sup> & 3<sup>RD</sup> MARCH, 2020

Fair general demand for the 195,258 packages (12,790,050.00kilos) on offer at irregularly easier rates closely following quality. 14.65% remained without bids.

CTC QUOTATIONS	BP1 – USC	PF1 – USC	PD – USC	D1 - USC
Best	196 – 633	250 – 326	240 – 332	241 – 305
Good	185 – 279	242 – 278	230 – 282	229 – 294
Good Medium	180 – 226	230 – 269	215 – 260	217 – 272
Medium	195 – 230	210 – 250	204 – 242	204 – 235
Lower Medium	115 – 202	110 – 218	100 – 198	110- 196
Plainer	080 – 170	060 – 188	050 – 170	048 – 158

**SILIGURI :** Sale 10 Report not received.