

# NATIONAL BROKERS LIMITED

<http://nationalbrokersbd.com/>

**Tea Auctioneers since 1948**

## TEA MARKET REPORT – Sale 02 held on Monday 17<sup>th</sup> May, 2021

**CTC LEAF:** 19,574 packages of Current Season and 676 packages of Old Season teas on offer met with a fair demand.

**BROKENS:** A few well made Brokens met with a good demand at lower rates often easing upto Tk.10/-. Medium varieties met with less demand and prices declined by Tk.10/- to Tk.15/- over last with fair withdrawals. Plain teas saw some demand but also eased further whilst BLF saw some interest and were about steady to occasionally easier.

**FANNINGS:** Best and good Fannings were well supported at easier rates but Medium and Plain types were easier following less demand. BLF teas saw some interest around last levels.

**CTC DUST:** 5,664 packages of Current Season and 20 packages of Old Season teas on offer met with a

good demand. Good liquoring varieties were an easier market and sold at a drop of Tk.8/- to Tk.10/- following quality. Others particularly CDs showed a sharp decline in levels with fair withdrawals. Plain and BLF teas saw some interest and sold at around last levels. Blenders lent strong support with fair interest from the Loose tea buyers.

**COMMENTS:** There was slightly more activity from the Major Blenders but Loose tea buyers were more selective. Best and good varieties were readily absorbed at lower levels ranging between Tk.205/- to Tk.212/- and sometimes more following competition. However, there were more withdrawals this week.

Dusts were an easier market.

**Our catalogue ( Sale 02 ) : Avg: Tk 215.16, Sold 72.7% & ( Sale 01 ) Avg: Tk 214.93, sold 77.1%.**

### Quotations – This Week – (In Taka)

Brokens	This Week	Last Week	Fannings	This week	Last Week	Dust	This week	Last Week
Large	207-212	NQTA	Best	208-215	215-225	PD	205-232	213-228
Medium	203-212	205-215	Good	203-206	210-215	RD	180-275	165-304
Small	205-215	210-222	Medium	195-200	200-210	D	195-285	194-300
Plain	185-190	190-195	Plain	185-190	190-195	CD	206-311	205-345
BLF	165-180	165-180	BLF	165-180	165-180	BLF	180-211	165

Exchange Rates 17 May. 2021 Sterling Pound: Tk. 116.9962, dollar: Tk. 83.6702

### Top Prices – This Week

Category – CTC	Garden	Grade	Package	Price	Buyer(s)
Brokens	* Madhupur	GBOP	10	285/-	Lux
Fannings	Madhupur	PF	10	245/-	Aftab
Clonal Brokens	* Madhupur	GBOP(BT1)	10	328/-	Rahim
Clonal Fannings	Kaiyacherra Dalu	OF	10	281/-	Tara
RD/PD(Incl. Clone)	* Madhupur	RD(BT1)	10	275/-	AKT
D (Incl. Clone)	* Madhupur	D(BT1)	10	285/-	Sen
CD (Incl Clone)	Madhupur	CD(BT1)	5	371/-	Aftab

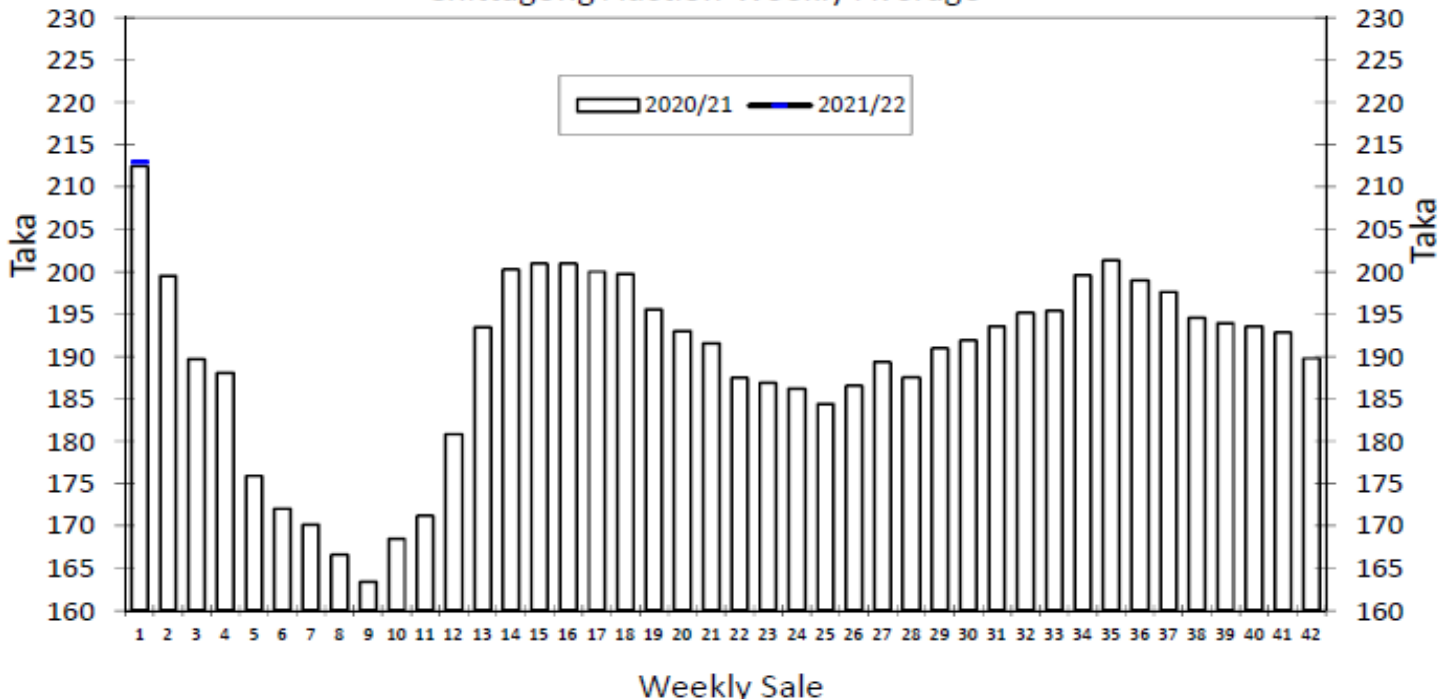
\* Above price(s) realised in our catalogue

### Offerings

Type	This Sale ( Sale 02 )				Next Sale ( Sale 03 )			
	Season 2021-2022		Season 2020-2021		Season 2021-2022		Season 2020-2021	
	Packages	Qty/Kg	Packages	Qty/Kg	Packages	Qty/Kg	Packages	Qty/Kg
Leaf	20,250	1,109,700	22,250	1,217,075	20,434	1,120,601	31,134	1,703,030
Dust	5,684	311,483	4,053	221,699	6,135	336,198	5,187	283,729
Total	25,934	1,421,183	26,303	1,438,774	26,569	1,456,799	36,321	1,986,759

Chittagong Auction Average: (Sale – 01 )  
Season 2021-22: Tk. 213.00 & Season 2020-21: Tk. 212.46

### Chittagong Auction Weekly Average



## Quantities of Teas Sold &amp; Average Prices Realised

Category	For the Sale				Up-to-Date Sale							
	Season 2020/21		Season 2021/22		Season 2020/21		Season 2021/22		(+/-) Season 2020/21			
	Qty. (Kg)	Taka	Qty. (Kg)	Taka	Qty. (Kg)	(%)	Taka	Qty. (Kg)	(%)	Taka	Qty. (Kg)	Taka
CTC LEAF	631,812.5	210.61	775,078.0	207.29	631,812.5	87.0%	210.61	775,078.0	72.2%	207.29	143,265.5	-3.32
CTC DUST	92,599.0	225.11	220,275.2	233.06	92,599.0	12.8%	225.11	220,275.2	20.5%	233.06	127,676.2	7.96
Sub-Total	724,411.5	212.46	995,353.2	213.00	724,411.5	99.8%	212.46	995,353.2	92.8%	213.00	270,941.7	0.53
ORTHODOX	0.0	0.00	8,992.0	104.28	0.0	0.0%	0.00	8,992.0	0.8%	104.28	8,992.0	104.28
Total	724,411.5	212.46	1,004,345.2	212.02	724,411.5	99.8%	212.46	1,004,345.2	93.6%	212.02	279,933.7	-0.44
GREEN TEA	0.0	0.00	14.9	1,038.32	0.0	0.00%	0.00	14.9	0.0%	1,038.32	14.9	1,038.32
Total	724,411.5	212.46	1,004,360.1	212.04	724,411.5	99.8%	212.46	1,004,360.1	93.6%	212.04	279,948.6	-0.43
Other (s)	1,423.5	132.50	68,622.7	167.06	1,423.5	100.0%	132.50	68,622.7	100.0%	167.06	67,199.2	34.56
G.Total	725,835.0	212.31	1,072,982.8	209.16	725,835.0	100.0%	212.31	1,072,982.8	100%	209.16	347,147.8	-3.15

## Buyer Purchase Analysis

Buyer	For the Sale				Up-to-Date Sale							
	Season 2020/21		Season 2021/22		Season 2020/21		Season 2021/22		(+/-) Season 2020/21			
	Qty. (Kg)	Taka	Qty. (Kg)	Taka	Qty. (Kg)	(%)	Taka	Qty. (Kg)	(%)	Taka	Qty. (Kg)	Taka
Export	0.0	0.00	0.0	0.00	0.0	0.00%	0.00	0.0	0.0%	0.00	0.0	0.00
Internal	725,835.0	212.31	1,072,982.8	209.16	725,835.0	100.00%	212.31	1,072,982.8	100.0%	209.16	347,147.8	-3.15
Grand Total	725,835.0	212.31	1,072,982.8	209.16	725,835.0	100.00%	212.31	1,072,982.8	100.0%	209.16	347,147.8	-3.15

## Crop of Major Tea Producing &amp; Exporting Countries

Qty. (M.Kg)	For the Month				Up-to-Date		
Country	Month	2020	2021	(+/-) 2020	2020	2021	(+/-) 2020
Bangladesh *	March	1.625	1.681	0.056	1.826	1.986	0.160
Sri Lanka	March	13.50	28.40	14.90	53.60	74.00	20.40
North India	March	32.50	46.90	14.40	33.70	49.00	15.30
South India	March	11.30	19.60	8.30	40.60	50.80	10.20
All India	March	43.80	66.50	22.70	74.30	99.80	25.50
Kenya	March	54.90	48.70	-6.20	158.60	141.00	-17.60

Qty. (M.Kg)	For the Month				Up-to-Date		
Country	Month	2019	2020	(+/-) 2019	2019	2020	(+/-) 2019
Bangladesh *	December	6.42	6.96	0.54	96.07	86.39	-9.7
All India	December	66.3	73.9	7.6	1390.1	1255.6	-134.5

## General + Other Market(s) This/Last Week

### KOLKATA SALE 19- 12<sup>TH</sup> MAY, 2021

CTC: There was good demand. Assams opened to irregular levels around last at the start of the sale. With the progress of the sale, interest improved and levels firmed up with brighter and well-made Assams selling at steady to at times dearer rates. Dooars were firm to dearer including medium and plainer sorts.

Tea Category USC/KG	All categories
BEST ASSAMS	396-437
GOOD ASSAMS	328-382
MED ASSAMS	259-314
GOOD DOOARS	355-423
MED & PLAINER DOOARS	218-314

### SILIGURI SALE 19- 12<sup>TH</sup> MAY, 2021

LEAF & DUST: Good demand. Improved sorts across all categories tended dearer. The remainder was irregular and easier following quality. Buying Pattern: Internal - Active. Blenders- HUL-operated /TCPL selective.

Quotations (USC/KG)	Brokens(USC/kg)	Fannings(USC/kg)	Dust (USC/kg)
GOOD / BEST	341-451	335-430	300-348
MEDIUM/ BETTER MEDIUM	287-335	287-328	246-294
COMMON / BLF	225-280	225-280	212-239

### COONOOR SALE 19- 15<sup>TH</sup> MAY, 2021

Market opened to a good demand and teas initially sold at steady levels, as the sale progressed demand started depleting especially from the Internal buyers and only the major packeteers and selective Exporters were operating. Up country buyers and local traders were rather selective this week.

CTC Leaf (USC/KG)	Best	Good	Better Medium	Medium	Plain
Larger Brokens	173-212	153-172	147-152	142-146	137-141
Medium Brokens	218-261	184-214	173-183	146-172	137-145
Smaller Brokens	214-268	195-212	177-194	161-176	147-160
Fannings	205-243	193-203	177-191	160-176	143-158

### MOMBASA SALE 19- 10<sup>TH</sup> /11<sup>TH</sup> & 12<sup>TH</sup> MAY 2021

There was good general demand for the 187,218 packages (12,406,954.50 kilos) in the market at irregular levels. 13.60% remained unsold.

CTC QUOTATIONS	BP1 – USC	PF1 – USC	PD – USC	D1 - USC
Best	200 – 570	214 – 326	206 – 318	183 – 257
Good	195 – 408	212 – 243	202 – 240	178 – 212
Good Medium	183 – 268	206 – 221	200 – 228	162 – 200
Medium	166 – 230	170 – 216	175 – 204	150 – 182
Lower Medium	136 – 188	119 – 194	098 – 240	106 – 208
Plainer	097 – 168	088 – 177	080 – 200	078 – 184