

NATIONAL BROKERS LIMITED

<http://nationalbrokersbd.com/>

Tea Auctioneers since 1948

TEA MARKET REPORT – Sale 29 held on Monday 21st November, 2022

CTC LEAF: 59,199 packages of Current Season teas on offer continued to meet with a strong demand.

BROKENS: There was only a few bright liquoring Brokens available which were well sought after at around last levels. Other varieties also saw good demand but were a little easier following quality except the plainest which were often discounted with fair withdrawals. BLF teas saw a limited demand and were discounted with quite heavy withdrawals.

FANNINGS: Bright Fannings were strongly competed for and often advanced by Tk.5/- and more per kg. Good Fannings were also in strong demand and were mostly firm. Medium types met with a fairly good demand and were just about steady. Plain types similarly saw some demand but mostly eased with fair withdrawals. BLF teas saw only a limited demand and were discounted with quite heavy withdrawal.

CTC DUST: 11,946 packages of Current Season teas on offer met with good general demand. Select

few good liquoring well made Dusts met with good competition and advanced by Tk.10/- to Tk.15/-. Other good liquoring Dusts also sold well at around last levels. Mediums were fully firm to slightly dearer closely following quality. Plain and BLF Dusts were an easier market and saw fair withdrawals. Blenders lent strong support with fair interest from the Loose tea buyers.

COMMENTS: A bright feature of the sale was the strong competition for best liquoring Fannings on offer which mostly advanced in price. Other brighter varieties also witnessed quite a good demand at about firm rates. Blenders were more active with fair interest from the Loose tea buyers.

Good liquoring Dusts were a strong feature of the sale.

Our catalogue: (Sale 29) Avg: Tk 226.27 Sold 80.2% & (Sale 28) Avg: Tk 221.22, sold 73.1%.

Quotations – This Week – (In Taka)

Brokens	This Week	Last Week	Fannings	This week	Last Week	Dust	This week	Last Week
Large	215-225 nom	215-225 nom	Best	240-260	235-255	PD	198-270	195-280
Medium	210-220	210-220	Good	222-235	220-230	RD	190-382	170-385
Small	210-225	210-225	Medium	205-210	205-210	D	185-378	155-285
Plain	170-185	180-190	Plain	170-185	180-190	CD	150-390	150-315
BLF	130-145	125-145	BLF	130-145	125-145	BLF	NQTA	155-170

Exchange Rates 21st November, 2022 Sterling Pound: Tk. 118.4250 dollar: Tk. 100.0000

Top Prices – This Week

Category – CTC	Garden	Grade	Package	Price	Buyer(s)
Brokens	Dantmara	GBOP	10	284/-	FTH
Fannings	Jhemai	OF	10	290/-	FTH
Clonal Brokens	* Madhupur	GBOP(BT1)	20	400/-	Akij
Clonal Fannings	* Madhupur	PF(BT1)	60	375/-	Ispahani/AKT
PD/RD (Incl Clone)	* Madhupur	RD(BT1)	10	382/-	Meghna
D (Incl Clone)	* Madhupur	D(BT1)	20	378/-	Ispahani/AKT
CD (Incl Clone)	* Madhupur	CD(BT1)	10	390/-	Power

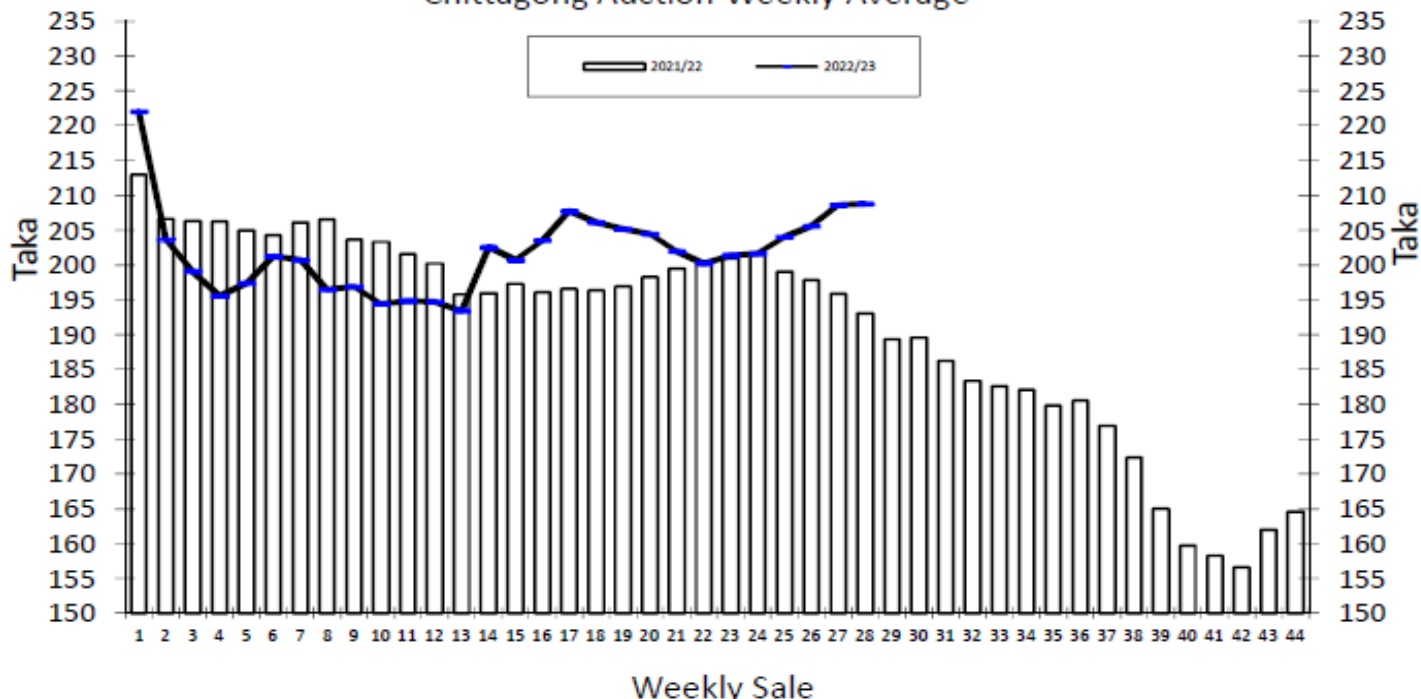
* Above price(s) realised in our catalogue

Offerings

Type	This Sale (Sale 29)				Next Sale (Sale 30)			
	Season 2022-23		Season 2021-22		Season 2022-23		Season 2021-22	
	Packages	Qty/Kg	Packages	Qty/Kg	Packages	Qty/Kg	Packages	Qty/Kg
Leaf	59,199	2,954,030	63,891	3,502,505	58,775	2,932,873	54,152	2,968,613
Dust	11,946	596,105	12,196	658,693	12,824	639,918	11,690	632,286
Total	71,145	3,550,136	76,087	4,161,198	71,599	3,572,790	65,842	3,600,899

Chittagong Auction Average: Sale 28
Season 2022/23: Tk. 208.77 & Season 2021/22: Tk. 193.10

Chittagong Auction Weekly Average



Category	For the Sale						Up-to-Date Sale					
	Season 2021/22		Season 2022/23		Season 2021/22		Season 2022/23		(+/-) Season 2021/22		Taka	
	Qty. (Kg)	Taka	Qty. (Kg)	Taka	Qty. (Kg)	(%)	Taka	Qty. (Kg)	(%)	Taka		Qty. (Kg)
CTC LEAF	1,842,700.9	189.61	1,915,671.2	205.43	45,494,302.7	78.2%	196.51	42,584,593.4	78.8%	195.99	-2,909,709.3	-0.52
CTC DUST	480,424.5	206.47	468,497.5	222.42	12,426,818.1	21.3%	212.24	11,419,957.5	21.1%	221.57	-1,006,860.6	9.33
Sub-Total	2,323,125.4	193.10	2,384,168.7	208.77	57,921,120.8	99.5%	199.89	54,004,550.9	99.9%	201.40	-3,916,569.9	1.51
Orthodox	70.0	1,205.00	0.0	0.00	26,105.0	0.0%	104.44	0.0	0.0%	0.00	-26,105.0	-104.44
Total	2,323,195.4	193.13	2,384,168.7	208.77	57,947,225.8	99.6%	199.84	54,004,550.9	99.9%	201.40	-3,942,674.9	1.56
Green Tea	30.5	1,431.15	238.0	440.51	10,451.4	0.0%	468.32	2,741.5	0.0%	468.62	-7,709.9	0.30
Oolong Tea	0.0	0.00	2.0	1,750.00	0.0	0.0%	0.00	4.0	0.0%	1,575.00	4.0	1,575.00
Yellow Tea	0.0	0.00	0.0	0.00	20.0	0.0%	1,400.00	0.0	0.0%	0.00	-20.0	-1,400.00
Total	2,323,225.9	193.15	2,384,408.7	208.79	57,957,697.2	99.6%	199.89	54,007,296.4	99.9%	201.41	-3,950,400.8	1.52
Other (s)	0.0	0.00	0.0	0.00	250,346.2	0.4%	163.83	43,126.3	0.1%	129.18	-207,219.9	-34.65
G.Total	2,323,225.9	193.15	2,384,408.7	208.79	58,208,043.4	100.0%	199.74	54,050,422.7	100%	201.36	-4,157,620.7	1.62

Buyer	Buyer Purchase Analysis						Up-to-Date Sale					
	Season 2021/22		Season 2022/23		Season 2021/22		Season 2022/23		(+/-) Season 2021/22		Taka	
	Qty. (Kg)	Taka	Qty. (Kg)	Taka	Qty. (Kg)	(%)	Taka	Qty. (Kg)	(%)	Taka		Qty. (Kg)
Export	0.0	0.00	0.0	0.00	24,143.6	0.04%	199.24	10,984.8	0.02%	208.76	-13,158.8	9.53
Internal	2,323,225.9	193.15	2,384,408.7	208.79	58,183,899.8	99.96%	199.74	54,039,437.9	99.98%	201.35	-4,144,461.9	1.62
Grand Total	2,323,225.9	193.15	2,384,408.7	208.79	58,208,043.4	100.00%	199.74	54,050,422.7	100.00%	201.36	-4,157,620.7	1.62

Crop of Major Tea Producing & Exporting Countries

Country	Month	2020	2021	2022	(+/-) 2021	2020	2021	2022	(+/-) 2021
Bangladesh *	September	12.14	12.61	14.74	2.13	57.45	64.76	63.83	-0.92
North India	September	163.9	142.6	166.7	24.1	698.7	781.5	808.9	27.4
South India	September	24.1	20.6	23.3	2.7	160.1	181.9	175.8	-6.1
All India	September	188.0	163.2	190.0	26.8	858.8	963.4	984.7	21.3
Sri Lanka	September	22.1	22.8	20.9	-1.9	201.5	234.8	192.4	-42.4
Kenya	July	36.5	34.7	33.9	-0.9	377.0	308.8	304.2	-4.6

* Source: Bangladesh Tea Board's Monthly Statistical Bulletin

General + Other Market(s) This/Last Week

KOLKATA SALE 46- 16th /19th NOVEMBER, 2022

CTC: There was good demand. Better liquoring Assams were irregularly easier. Browner descriptions were further discounted. Well-made medium Assams sold at irregular levels around last whilst the remainder in the medium and plainer categories were easier. Better & medium Dooars were irregular closely following quality whilst the plainer category was steady. Bold Brokens witnessed a drop in levels on the face of much reduced Export interest. Export accounts were barely active. Local buyers were active on the Dooars & other clean, well-made descriptions.

Tea Category	Brokens	Fannings	Dusts
BEST ASSAMS	391-440	379-415	379-415
GOOD ASSAMS	330-366	317-354	330-354
MED ASSAMS	208-281	195-269	208-281
BEST DOOARS	305-317	293-305	NA
GOOD DOOARS	244-293	244-281	NA
MED/PLN DOOARS	159-220	159-208	NA

COONOOR SALE 46 - 18th NOVEMBER, 2022

DEMAND: - Improved demand on the best teas & Good general demand at irregular prices on the remainders.
MARKET: - The total CTC leaf teas sold this week was 81.40 % (1037458.11kgs) of the total offering of 1274549.75 Kgs.

CTC Leaf(USC/KG)	Best	Good	Better Medium	Medium	Plain
Larger Brokens	169-189	142-165	136-140	122-134	115-121
Medium Brokens	172-222	150-166	143-149	129-142	120-128
Smaller Brokens	172-225	147-171	143-145	134-142	126-133
Fannings	170-210	153-167	147-149	134-145	125-133

SILIGURI SALE 46- 16TH NOVEMBER, 2022

LEAF: Good general demand. Levels eased irregularly following decline in quality & saw some withdrawals. Medium/Plainer sorts were around last. DUST: Good demand at steady to easier levels. Buying Pattern: Internal-Main stay. Blenders – Operated.

Quotations (USC/KG)	Brokens(USC/kg)	Fannings(USC/kg)	Dust (USC/kg)
GOOD / BEST	263-385	263-372	250-305
MEDIUM / BETTER MEDIUM	189-256	189-256	189-244
COMMON / BLF	140-183	147-183	159-183

MOMBASA SALE 46- 14TH /15TH & 16TH NOVEMBER, 2022

Fairly good general demand for the 211,155 packages (14,214,109.00 kilos) in the market; 33.45% were neglected.

CTC QUOTATIONS	BP1 – USC	PF1 – USC	PD – USC	D1 - USC
Best	280 – 492	290 – 316	272 – 330	275 – 315
Good	270 – 298	289 – 302	273 – 306	275 – 290
Good Medium	260 – 290	283 – 296	273 – 290	272 – 288
Medium (KTDA)	250 – 282	244 – 272	258 – 282	245 – 285
Medium (Plantations)	208 – 302	218 – 251	220 – 248	219 – 256
Lower Medium	143 – 240	150 – 226	150 – 232	156 – 224
Plainer	106 – 220	132 – 199	132 – 212	144 – 215