

NATIONAL BROKERS LIMITED

<http://nationalbrokersbd.com/>

Tea Auctioneers since 1948

TEA MARKET REPORT – Sale 40 held on Monday 14th February, 2022

CTC LEAF: 43,705 packages of Current Season teas on offer met with only a fair demand.

BROKENS: Clean Brokens which were small in quantity sold well at slightly easier rates but all others met with a selective demand and where sold recorded a drop of Tk.5/- to Tk.7/-. However, there were several withdrawals in this category. BLF teas witnessed slightly more demand and prices were about firm.

FANNINGS: Likewise, few clean ones on offer met with quite strong competition and were often touch dearer. All other varieties eased in line with quality and there were also fairly heavy withdrawals. BLF teas witnessed slightly more demand and prices were about steady.

CTC DUST: 10,311 packages of Current Season teas on offer met with good demand. Good liquoring

Dusts sold well at around last levels. Their medium Dusts witnessed fair competition and were firm on last. Plain and BLF Dusts were less in demand and prices were once again a little easier with fair withdrawals. Blenders lent strong support with fair interest from the Loose tea buyers.

COMMENTS: Offerings comprised of mostly plain and end of season varieties which met with only a fair demand. Blenders were again active whilst there was touch more support from the Loose tea buyers. Owing to the sale of a larger proportion of lower priced teas, average price realisation was considerably lower than last. Dusts were an easier market

Our catalogue (Sale 40): Avg: Tk 165.93, Sold 63.9 %
& (Sale 39) Avg: Tk 180.23, Sold 55.6 %.

Quotations – This Week – (In Taka)

Brokens	This Week	Last Week	Fannings	This week	Last Week	Dust	This week	Last Week
Large	NQTA	NQTA	Best	205-215 nom	205-215 nom	PD	167-225	170-240
Medium	142-155	145-160	Good	165-170 nom	170-175 nom	RD	120-272	120-279
Small	147-160	152-165	Medium	145-155	150-160	D	125-261	130-272
Plain	130-140	130-140	Plain	130-140	130-140	CD	136-257	142-266
BLF	120-140	120-140	BLF	120-140	120-140	BLF	122-145	120-142

Exchange Rates 7th February, 2022 Sterling Pound: Tk. 113.8063 dollar: Tk. 84.7665

Top Prices – This Week

Category – CTC	Garden	Grade	Package	Price	Buyer(s)
Brokens	Rangapani	GBOP	20	245/-	Mintu/Aria
Fannings	Madhupur	PF	10	298/-	Sharif
Clonal Brokens	Clevedon	GBOP(S)	10	272/-	PA
Clonal Fannings	Madhupur	PF(BT1)	10	289/-	Mintu
PD/RD Incl. Clone	* Daragaon	RD	10	272/-	Meghna
D Incl. Clone	* Daragaon	D	20	261/-	KT/AKT
CD Incl. Clone	Zareen	CD	10	265/-	Shawon

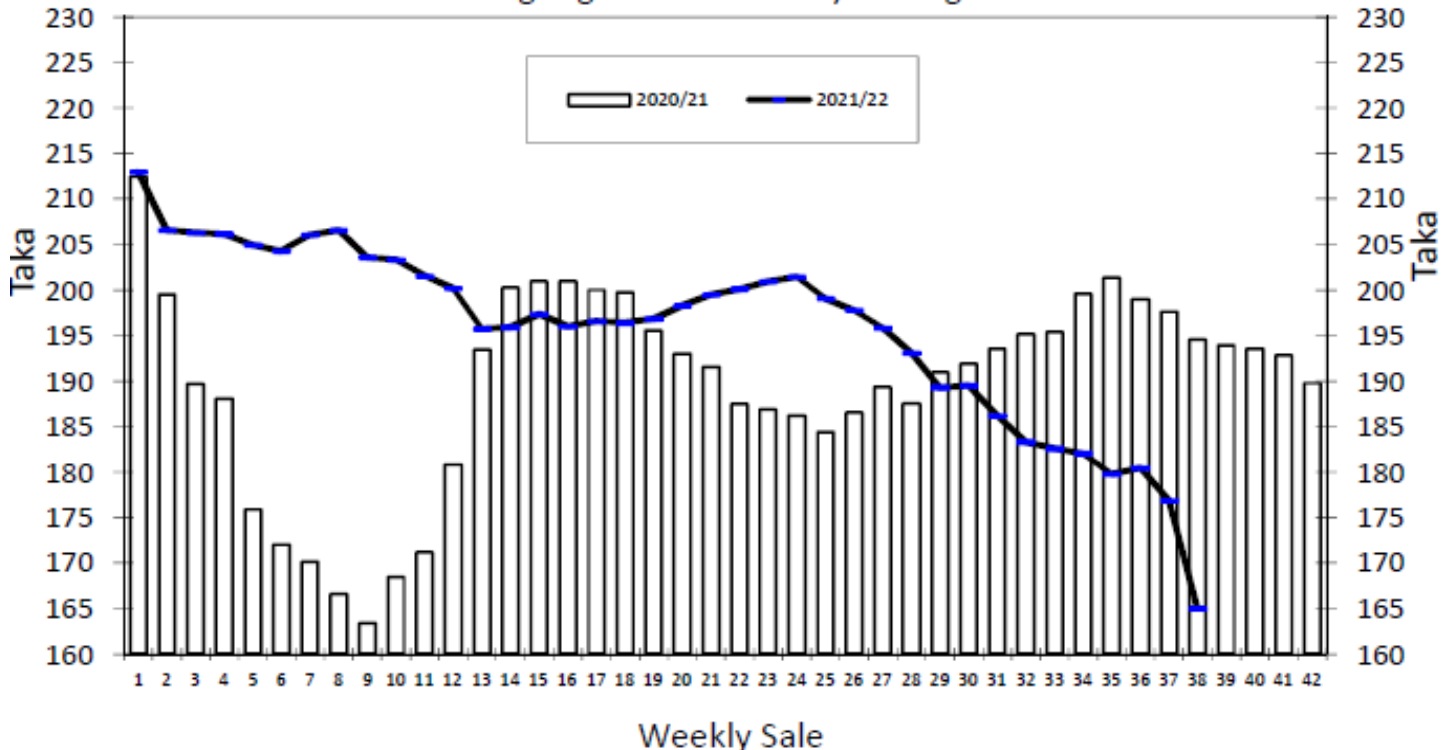
* Above price(s) realised in our catalogue

Offerings

Type	This Sale (Sale 40)		Next Sale (Sale 41)					
	Season 2021-2022	Season 2020-2021	Season 2021-2022	Season 2020-2021				
	Packages	Qty/Kg	Packages	Qty/Kg	Packages	Qty/Kg	Packages	Qty/Kg
Leaf	43,705	2,395,908	18,628	1,020,814	37,660	2,065,274	11,141	610,527
Dust	10,311	558,227	6,169	338,061	8,887	487,008	2,527	138,480
Total	54,016	2,954,135	24,797	1,358,876	46,547	2,552,282	13,668	749,006

Chittagong Auction Average: (Sale – 39)
Season 2021-22: Tk. 165.03 & Season 2020-21: Tk. 194.56

Chittagong Auction Weekly Average



Quantities of Teas Sold & Average Prices Realised

Category	For the Sale				Up-to-Date Sale							
	Season 2020/21		Season 2021/22		Season 2020/21		Season 2021/22		(+/-) Season 2020/21			
	Qty. (Kg)	Taka	Qty. (Kg)	Taka	Qty. (Kg)	(%)	Taka	Qty. (Kg)	(%)	Taka	Qty. (Kg)	Taka
CTC LEAF	1,354,160.5	190.70	1,491,833.0	158.61	62,705,877.0	79.2%	183.26	64,416,375.6	78.5%	190.22	1,710,498.6	6.96
CTC DUST	378,936.0	205.52	362,642.2	191.45	15,922,340.7	20.1%	214.25	17,365,437.5	21.2%	210.48	1,443,096.7	-3.77
Sub-Total	1,733,096.5	193.94	1,854,475.2	165.03	78,628,217.7	99.4%	189.54	81,781,813.1	99.6%	194.53	3,153,595.4	4.99
Orthodox	0.0	0.00	0.0	0.00	26,060.5	0.0%	122.99	26,105.0	0.0%	104.44	44.5	-18.55
Total	1,733,096.5	193.94	1,854,475.2	165.03	78,654,278.2	99.4%	189.52	81,807,918.1	99.7%	194.50	3,153,639.9	4.98
Green Tea	10.0	1,400.00	27.5	1,217.45	14,934.7	0.0%	455.53	10,934.4	0.0%	508.35	-4,000.3	52.82
Yellow Tea	2,654,318.8	186.29	0.0	0.00	0.0	0.0%	0.00	20.0	0.0%	1,400.00	20.0	1,400.00
Total	1,733,106.5	193.94	1,854,502.7	165.05	78,669,212.9	99.4%	189.57	81,818,872.5	99.7%	194.54	3,149,659.6	4.97
Other (s)	6,743.7	161.95	0.0	0.00	463,774.0	99.8%	114.89	253,843.2	0.3%	162.94	-209,930.8	48.05
G.Total	1,739,850.2	193.82	1,854,502.7	165.05	79,132,986.9	100.0%	189.13	82,072,715.7	100%	194.44	2,939,728.8	5.31

Buyer Purchase Analysis

Buyer	For the Sale				Up-to-Date Sale							
	Season 2020/21		Season 2021/22		Season 2020/21		Season 2021/22		(+/-) Season 2020/21			
	Qty. (Kg)	Taka	Qty. (Kg)	Taka	Qty. (Kg)	(%)	Taka	Qty. (Kg)	(%)	Taka	Qty. (Kg)	Taka
Export	0.0	0.00	0.0	0.00	134,400.8	0.17%	199.62	24,143.6	0.0%	199.24	-110,257.2	-0.38
Internal	1,739,850.2	193.82	1,854,502.7	165.05	78,998,586.1	99.83%	189.12	82,048,572.1	100.0%	194.44	3,049,986.0	5.33
Grand Total	1,739,850.2	193.82	1,854,502.7	165.05	79,132,986.9	100.00%	189.13	82,072,715.7	100.0%	194.44	2,939,728.8	5.31

Crop of Major Tea Producing & Exporting Countries

Country	Qty. (M.Kg)	For the Month				Up-to-Date			
		Month	2019	2020	2021 (+/-) 2020	2019	2020	2021 (+/-) 2020	
Bangladesh *	December	6.42	6.96	6.93	-0.03	96.07	86.39	96.51	10.11
North India	December	48.3	53.6	49.7	-3.9	1171.1	1035.5	1093.3	57.8
South India	December	18.1	20.5	14.8	-5.7	219.0	222.0	235.7	13.7
All India	December	66.4	74.1	64.5	-9.6	1390.1	1257.5	1329.0	71.5
Sri Lanka	December	21.9	28.6	20.4	-8.2	300.1	278.8	299.3	20.5
Kenya	October	46.3	48.3	49.0	0.7	363.1	467.4	434.6	-32.9

* Source: Bangladesh Tea Board's Monthly Statistical Bulletin

OTHER MARKET(S)

COONOOR SALE 06- 12th FEBRUARY, 2022

Selective demand continues to persist on the best and good teas. Other category teas met with fair demand at irregular price levels. The total CTC offering stood at 947475 Kgs of which 777481 Kgs (82.06%) was sold. Best and good liquoring selective lines sold at firm to dearer prices, whilst larger weight of teas sold irregularly easier with a fair amount of teas being out listed. Better medium and medium teas sold irregularly easier by Rs.2/3 except for the larger broken grades sold at barely steady levels. Plainer sorts fetched prices around last levels however, the medium Broken grades in these sorts saw some escalation in price especially on the cleaner and blacker sorts. The major Blenders continued to be the mainstay of the sale and their purchases stood at 39.58% of the total CTC leaf teas sold. Upcountry packeteer's and other traders continued to be choosy. The other regional buyers were selective. Exporters continued to be fairly active on the larger Broken and Fanning grades, especially the blacker, cleaner sorts.

CTC Leaf(USC/KG)	Best	Good	Better Medium	Medium	Plain
Larger Brokens	150-275	134-148	127-132	112-126	106-111
Medium Brokens	206-319	140-202	134-139	123-132	118-122
Smaller Brokens	205-320	159-200	136-157	126-135	122-124
Fannings	226-333	146-206	138-144	124-136	118-123

MOMBASA SALE 06- 7TH/9TH FEBRUARY, 2022

There was fairly good demand but at lower levels owing to price adjustments in the market for the 189,934 packages (12,503,390.00 kilos) on offer with 12.91% remaining unsold.

CTC QUOTATIONS	BP1 – USC	PF1 – USC	PD – USC	D1 - USC
Best	282 – 428	310 – 364	325 – 366	336 – 369
Good	274 – 304	308 – 332	324 – 343	330 – 356
Good Medium	246 – 308	307 – 324	318 – 336	300 – 350
Medium	260 – 266	260 – 297	266 – 306	239 – 311
Lower Medium	105 – 208	160 – 272	183 – 312	180 – 300
Plainer	084 – 172	108 – 220	110 – 236	110 – 226

KOLKATA SALE 05- 8TH/9TH FEBRUARY, 2022

CTC Leaf: There was good demand at barely steady to irregularly easier levels closely following quality for all Assams on offer. Doors sold at levels which were irregular around last and tending easier. Dust: The market followed a similar trend to the CTC Leaf market with teas selling at barely steady to irregularly easier levels for both Assams & Doors on offer. M/s Hindustan Unilever operated on a range of teas in both Leaf & Dust categories. M/s Tata Consumer Products operated selectively on the medium & plainer teas on offer, more so the cleaner, liquoring secondaries. Western India segments operated on good liquoring sorts. Exporters showed selective interest on larger Brokens. Regional packeteers were active on medium and plainer teas. Local buyers were active on the Doors.

Tea Category USC/KG	Brokens	Fannings	Dusts
BEST ASSAMS	371-423	357-397	397-437
GOOD ASSAMS	291-344	291-344	291-357
MED ASSAMS	185-265	198-251	198-278
BEST DOORS	331-397	304-344	NA
GOOD DOORS	212-291	212-265	212-238
MED & PLAINER DOORS	119-172	119-172	119-172