

NATIONAL BROKERS LIMITED

<http://nationalbrokersbd.com/>

Tea Auctioneers since 1948

TEA MARKET REPORT – Sale 20 held on Monday 19th September, 2022

CTC LEAF: 43,236 packages of Current Season teas on offer met with a stronger demand.

BROKENS: Best Brokens were keenly competed for and were dearer by Tk.5/- and more following competition. Good Brokens were also a strong market and were mostly dearer. Medium and Plain varieties sold well at mostly firm rates. BLF teas met with more demand and were generally firm with some withdrawals.

FANNINGS: Best Fannings were a strong feature of the sale and were dearer by Tk.5/- and more following competition. Good and Medium varieties also met with a little more demand at firm to slightly dearer rates. Plain varieties were again a good market and were generally firm. BLF teas met with more demand and were generally firm with some withdrawals.

CTC DUST: 8,473 packages of Current Season teas on offer met with a good demand. Good liquoring well

made Dusts met with a fairly strong demand selling at firm to dearer rates. Their Mediums sold well at around last levels closely following quality. Plain and BLF Dusts witnessed some demand but again prices declined with fair withdrawals. Blenders lent good support with fair interest from the Loose tea buyers.

COMMENTS: A slightly larger weight of tea on offer continued to meet with a strong demand from Blenders. Best liquoring teas on offer were a bright feature of the sale and these were again a dearer market. Loose tea buyer lent a little more support but were selective. BLF teas met with a little more demand.

Good liquoring Dusts were a strong feature of the sale.

Our catalogue: (Sale 20) Avg: Tk 217.39, Sold 81.8% & (Sale 19) Avg: Tk 225.47, sold 83.9%.

Quotations – This Week – (In Taka)

Brokens	This Week	Last Week	Fannings	This week	Last Week	Dust	This week	Last Week
Large	220-230 nom	220-230 nom	Best	235-250	230-250	PD	197-281	200-256
Medium	220-230	218-228	Good	227-232	224-229	RD	170-374	188-380
Small	222-232	220-230	Medium	215-225	210-220	D	160-380	215-305
Plain	200-210	195-205	Plain	200-210	195-205	CD	218-408	225-305
BLF	130-170	130-170	BLF	130-170	130-170	BLF	160-172	157-218

Exchange Rates 19th September, 2022 Sterling Pound: Tk. 112.8897, dollar: Tk. 99.0000

Top Prices – This Week

Category – CTC	Garden	Grade	Package	Price	Buyer(s)
Brokens	* Luskerpore	BOP	10	267/-	Sharif
Fannings	Amtali	GOF	10	259/-	Shati
Clonal Brokens	Kedarpur	GBOP(S)BT1	10	376/-	AKT
Clonal Fannings	Kedarpur	PF(BT1)	10	376/-	Meghna
PD/RD (Incl Clone)	* Madhupur	RD(TV1)	10	374/-	Meghna
D (Incl Clone)	* Madhupur	D(BT1)	20	380/-	Meghna/MA
CD (Incl Clone)	* Madhupur	CD(BT1)	10	408/-	Jam

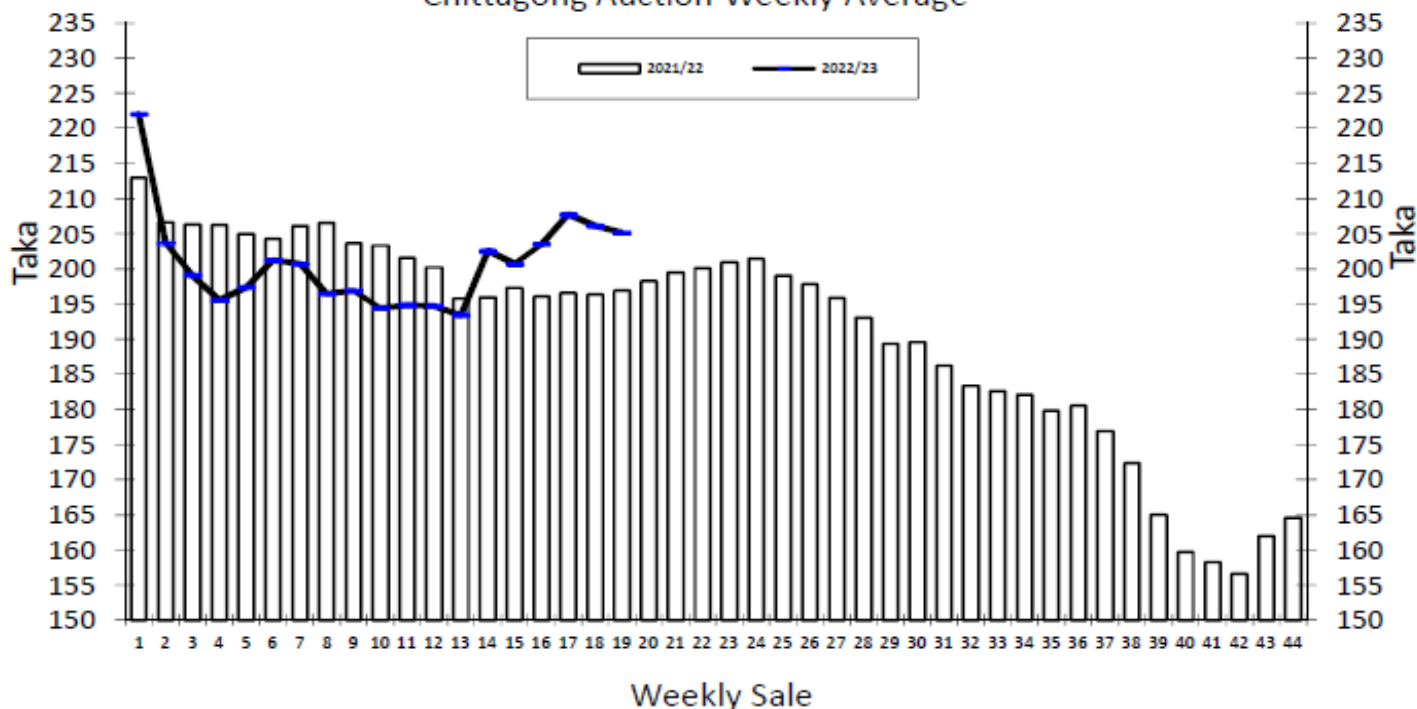
* Above price(s) realised in our catalogue

Offerings

Type	This Sale (Sale 20)				Next Sale (Sale 21)			
	Season 2022-23		Season 2021-22		Season 2022-23		Season 2021-22	
	Packages	Qty/Kg	Packages	Qty/Kg	Packages	Qty/Kg	Packages	Qty/Kg
Leaf	43,236	2,157,476	47,662	2,612,831	50,275	2,508,723	49,191	2,696,651
Dust	8,473	422,803	11,710	639,354	10,514	524,649	12,348	668,917
Total	51,709	2,580,279	59,372	3,252,185	60,789	3,033,371	61,539	3,365,568

Chittagong Auction Average: Sale 19
Season 2022/23: Tk. 205.18 & Season 2021/22: Tk. 196.85

Chittagong Auction Weekly Average



Quantities of Teas Sold & Average Prices Realised

Category	For the Sale						Up-to-Date Sale					
	Season 2021/22		Season 2022/23		Season 2021/22		Season 2022/23		(+/-) Season 2021/22			
	Qty. (Kg)	Taka	Qty. (Kg)	Taka	Qty. (Kg)	(%)	Taka	Qty. (Kg)	(%)	Taka	Qty. (Kg)	Taka
CTC LEAF	2,223,718.5	194.96	1,367,842.0	202.39	27,253,286.6	76.4%	196.97	26,834,591.9	78.0%	193.73	-418,694.7	-3.24
CTC DUST	487,783.4	205.47	280,338.7	218.79	8,152,824.5	22.9%	213.25	7,557,932.2	22.0%	221.70	-594,892.3	8.44
Sub-Total	2,711,501.9	196.85	1,648,180.7	205.18	35,406,111.1	99.2%	200.72	34,392,524.1	99.9%	199.88	-1,013,587.0	-0.85
Orthodox	0.0	0.00	0.0	0.00	17,065.0	0.0%	102.26	0.0	0.0%	0.00	-17,065.0	-102.26
Total	2,711,501.9	196.85	1,648,180.7	205.18	35,423,176.1	99.3%	200.68	34,392,524.1	99.9%	199.88	-1,030,652.0	-0.80
Green Tea	43.0	1,562.79	30.0	150.00	10,115.9	0.0%	435.04	2,349.0	0.0%	405.39	-7,766.9	-29.64
Yellow Tea	0.0	0.00	0.0	0.00	20.0	0.0%	1,400.00	0.0	0.0%	0.00	-20.0	-1,400.00
Total	2,711,544.9	196.88	1,648,210.7	205.18	35,433,312.0	99.3%	200.74	34,394,873.1	99.9%	199.89	-1,038,438.9	-0.85
Other (s)	274.0	140.00	0.0	0.00	240,937.4	0.7%	164.80	26,521.5	0.1%	120.25	-214,415.9	-44.55
G.Total	2,711,818.9	196.87	1,648,210.7	205.18	35,674,249.4	100.0%	200.50	34,421,394.6	100%	199.83	-1,252,854.8	-0.67

Buyer Purchase Analysis

Buyer	For the Sale				Up-to-Date Sale				(+/-) Season 2021/22			
	Season 2021/22		Season 2022/23		Season 2021/22		Season 2022/23		Qty. (Kg)	Taka		
	Qty. (Kg)	Taka	Qty. (Kg)	Taka	Qty. (Kg)	(%)	Taka	Qty. (Kg)	(%)	Taka		
Export	15,905.3	193.47	0.0	0.00	21,946.0	0.06%	197.63	7,489.5	0.0%	198.85	-14,456.5	1.22
Internal	2,695,913.6	196.89	1,648,210.7	205.18	35,652,303.4	99.94%	200.50	34,413,905.1	100.0%	199.83	-1,238,398.3	-0.67
Grand Total	2,711,818.9	196.87	1,648,210.7	205.18	35,674,249.4	100.00%	200.50	34,421,394.6	100.0%	199.83	-1,252,854.8	-0.67

Crop of Major Tea Producing & Exporting Countries

Country	Month	2020	2021	2022	(+/-) 2021	2020	2021	2022	(+/-) 2021
Bangladesh *	July	12.18	12.34	11.27	-1.07	33.99	37.76	38.33	0.57
Sri Lanka	July	26.4	26.4	19.9	-6.5	156.9	188.1	153.0	-35.1
North India	July	141.1	158.6	133.3	-25.3	391.9	483.9	475.7	-8.2
South India	July	20.3	21.9	19.2	-2.7	119.1	144.7	138.2	-6.5
All India	July	161.4	180.5	152.5	-28.0	511.0	628.6	613.9	-14.7
Kenya	June	46.0	43.5	43.3	-0.2	301.0	274.1	270.4	-3.7

* Source: Bangladesh Tea Board's Monthly Statistical Bulletin

General + Other Market(s) This/Last Week

KOLKATA 37- 13TH & 14TH SEPTEMBER, 2022

CTC: There was good demand. Assam were overall irregularly easier except for clean well-made descriptions which met with better interest and sold at irregular levels closely following quality. Better Doors were steady and sold around last levels. Plainer Doors met with improved demand and sold at steady rates. Exporters showed limited interest on larger Brokens and select Fannings. Local Buyers operated on the Doors.

Tea Category	Brokens	Fannings	Dusts
BEST ASSAMS	427-477	414-464	439-464
GOOD ASSAMS	351-414	339-402	351-427
MED ASSAMS	213-301	201-289	226-301
BEST DOORS	314-326	314-326	NA
GOOD DOORS	264-301	264-301	NA
MED/PLN DOORS	138-226	138-213	NA

SILIGURI SALE 37-14TH SEPTEMBER, 2022

LEAF: Fair demand. Levels eased irregularly following drop in quality. Plainer sorts saw better enquiry at last levels. DUST: Good demand at last levels. Buying Pattern: Internal- Main stay. Blenders- Active. Exporters- Selective.

Quotations (USC/KG)	Brokens(USC/kg)	Fannings(USC/kg)	Dust (USC/kg)
GOOD / BEST	289-376	276-370	251-314
MEDIUM/ BETTER MEDIUM	213-264	213-264	188-238
COMMON / BLF	138-201	138-201	138-176

COONOOR SALE 37- 15TH SEPTEMBER, 2022

DEMAND: - Good demand on all sorts of teas on offer with prices slightly moving upwards as the sale progressed especially for the better medium teas. MARKET: The total CTC leaf teas sold this week was 1161594.34Kgs of the total offering of 1337053.55Kgs.

CTC Leaf(USC/KG)	Best	Good	Better Medium	Medium	Plain
Larger Brokens	173-218	125-154	115-124	90-113	77-89
Medium Brokens	179-265	141-178	127-139	95-125	83-94
Smaller Brokens	183-259	146-178	131-144	102-129	92-100
Fannings	215-260	149-177	138-148	117-137	104-115

MOMBASA SALE 37- 12TH & 14TH SEPTEMBER, 2022

Good general demand at irregular levels for the 185,440 packages (12,188,293.00 kilos) available; 32.05% were neglected.

CTC QUOTATIONS	BP1 – USC	PF1 – USC	PD – USC	D1 - USC
Best	270 – 488	276 – 312	290 – 310	298 – 318
Good	255 – 302	278 – 289	290 – 300	294 – 308
Good Medium	257 – 289	270 – 286	284 – 300	270 – 306
Medium (KTDA)	250 – 260	244 – 263	258 – 274	245 – 287
Medium (Plantations)	190 – 268	195 – 242	218 – 254	214 – 258
Lower Medium	120 – 246	152 – 231	145 – 228	156 – 220
Plainer	099 – 172	116 – 199	130 – 198	132 – 188