

NATIONAL BROKERS LIMITED

<http://nationalbrokersbd.com/>

Tea Auctioneers since 1948

TEA MARKET REPORT – Sale 22 held on Monday 3rd October, 2022

CTC LEAF: 49,857 packages of Current Season teas were on offer. Strong demand continued.

BROKENS: All well made good liquoring Brokens were again a stronger market and prices appreciated further by Tk.5/- and more following competition. Good varieties sold well at firm to slightly dearer rates in line with quality. Medium varieties met with a fairly good demand and sold at around last levels. Browner Plainer types were again a selective market and were mostly easier in line with quality with fair withdrawals. BLFs once again met with less demand at around last levels with fair withdrawals.

FANNINGS: Best liquoring Fannings continued to meet with a strong demand and were dearer by Tk.5/- and more following competition. Good and medium varieties also sold well at mostly firm to occasionally dearer rates. Plainer types met with limited interest only and were mostly easier following quality with fair withdrawals. BLFs once again met with less demand at around last levels with fair withdrawals.

CTC DUST: 10,937 packages of Current Season Teas on offer met with good general demand. Good liquoring Dusts sold well at around last levels. Their Mediums tended slightly dearer with competition. Plain and BLF Dusts witnessed a decline in price levels with more withdrawals. Blenders lent strong support with fair interest from the Loose tea buyers.

COMMENTS: There was a slightly larger weight of browner, plainer varieties which met with a selective demand and witnessed fair withdrawals. However, a handful of good and best liquoring types continued to attract more competition this week and prices appreciated further. Blenders were more active whilst Loose tea buyers lent less support.

Good liquoring Dusts met with more competition.

Our catalogue: (Sale 22) Avg: Tk 227.33, Sold 69.2% & (Sale 21) Avg: Tk 229.86, sold 82.1%.

Quotations – This Week – (In Taka)

Brokens	This Week	Last Week	Fannings	This week	Last Week	Dust	This week	Last Week
Large	222-227 nom	220-225 nom	Best	242-255	240-255	PD	210-265	200-286
Medium	224-232	222-232	Good	232-240	232-237	RD	150-295	188-372
Small	225-234	225-235	Medium	225-230	220-230	D	153-275	204-382
Plain	190-205	195-205	Plain	190-205	195-205	CD	170-314	160-310
BLF	130-165	130-170	BLF	130-165	130-170	BLF	150-170	148-169

Exchange Rates 3rd October, 2022 Sterling Pound: Tk. 110.1376, dollar: Tk. 99.0000

Top Prices – This Week

Category – CTC	Garden	Grade	Package	Price	Buyer(s)
Brokens	Dantmara	GBOP	10	301/-	FTH
Fannings	Dantmara	OF	10	280/-	FTH
Clonal Brokens	* Madhupur	GBOP(S)BT1/TV1	40	370/-	AKT/Meghna
Clonal Fannings	* Madhupur	PF(BT1)	30	386/-	AKT/Meghna
PD/RD (Incl Clone)	Kedarpur	RD(BT1)	10	366/-	Orion
D (Incl Clone)	Kedarpur	D(BT1)	10	380/-	MA
CD (Incl Clone)	Kedarpur	CD(BT1)	10	380/-	Shawon

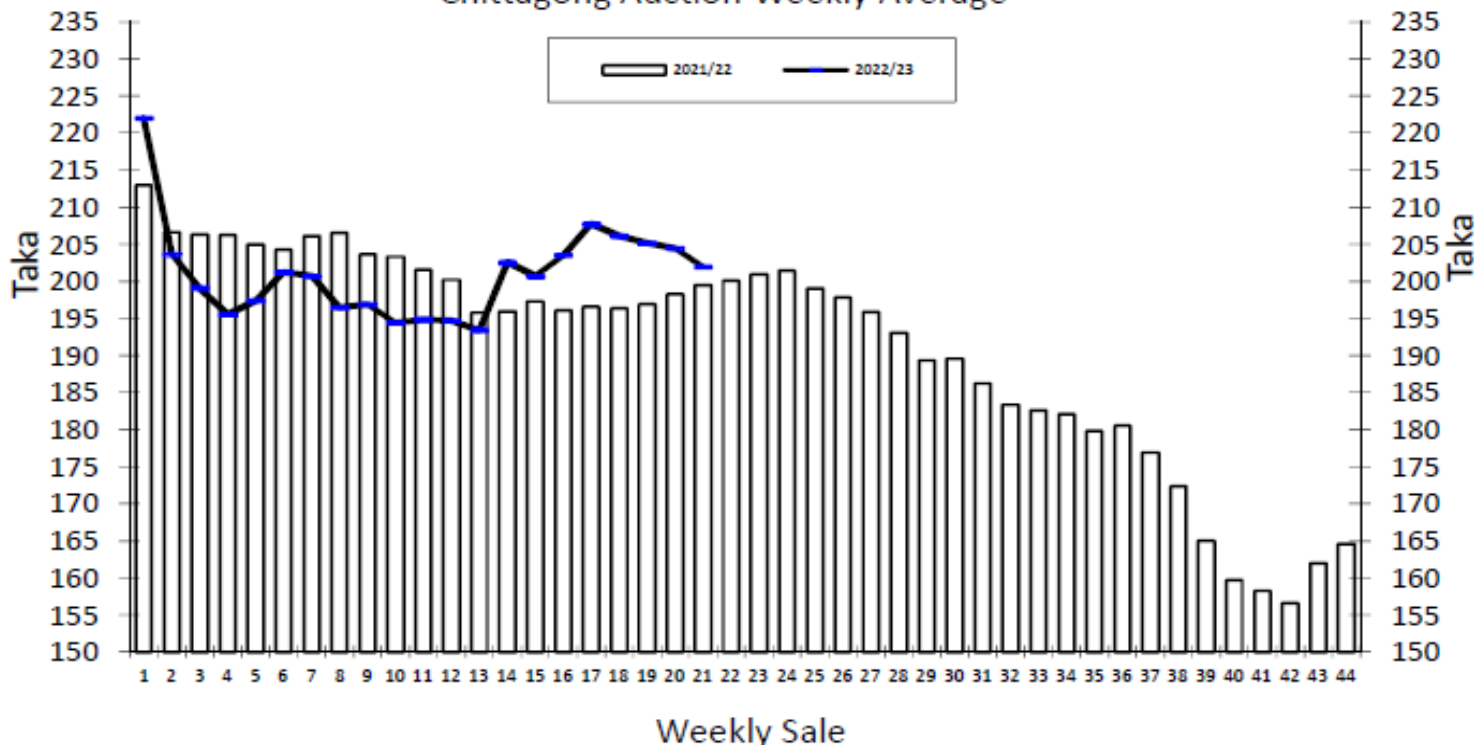
* Above price(s) realised in our catalogue

Offerings

Type	This Sale (Sale 22)				Next Sale (Sale 23)			
	Season 2022-23		Season 2021-22		Season 2022-23		Season 2021-22	
	Packages	Qty/Kg	Packages	Qty/Kg	Packages	Qty/Kg	Packages	Qty/Kg
Leaf	49,857	2,487,864	53,449	2,930,074	60,406	3,014,259	48,935	2,682,617
Dust	10,937	545,756	13,064	707,522	13,111	654,239	12,567	680,928
Total	60,794	3,033,621	66,513	3,637,596	73,517	3,668,498	61,502	3,363,544

Chittagong Auction Average: Sale 21
Season 2022/23: Tk. 201.95 & Season 2021/22: Tk. 199.48

Chittagong Auction Weekly Average



Quantities of Teas Sold & Average Prices Realised

Category	For the Sale						Up-to-Date Sale					
	Season 2021/22		Season 2022/23		Season 2021/22		Season 2022/23		(+/-) Season 2021/22			
	Qty. (Kg)	Taka	Qty. (Kg)	Taka	Qty. (Kg)	(%)	Taka	Qty. (Kg)	(%)	Taka	Qty. (Kg)	Taka
CTC LEAF	2,298,560.4	197.27	1,624,034.0	197.48	31,632,771.0	77.1%	196.95	29,949,434.7	78.3%	194.28	-1,683,336.3	-2.68
CTC DUST	499,466.7	209.69	393,188.3	220.43	9,124,661.5	22.2%	212.72	8,252,009.3	21.6%	221.71	-872,652.2	8.99
Sub-Total	2,798,027.1	199.48	2,017,222.3	201.95	40,757,432.5	99.3%	200.48	38,201,444.0	99.9%	200.20	-2,555,988.5	-0.28
Orthodox	0.0	0.00	0.0	0.00	26,035.0	0.1%	101.48	0.0	0.0%	0.00	-26,035.0	-101.48
Total	2,798,027.1	199.48	2,017,222.3	201.95	40,783,467.5	99.4%	200.42	38,201,444.0	99.9%	200.20	-2,582,023.5	-0.22
Green Tea	27.5	1,894.55	0.0	0.00	10,178.4	0.0%	443.81	2,349.0	0.0%	405.39	-7,829.4	-38.41
Yellow Tea	0.0	0.00	0.0	0.00	20.0	0.0%	1,400.00	0.0	0.0%	0.00	-20.0	-1,400.00
Total	2,798,054.6	199.50	2,017,222.3	201.95	40,793,665.9	99.4%	200.48	38,203,793.0	99.9%	200.22	-2,589,872.9	-0.27
Other (s)	0.0	0.00	0.0	0.00	249,798.6	0.6%	163.91	26,521.5	0.1%	120.25	-223,277.1	-43.66
G.Total	2,798,054.6	199.50	2,017,222.3	201.95	41,043,464.5	100.0%	200.26	38,230,314.5	100%	200.16	-2,813,150.0	-0.10

Buyer Purchase Analysis

Buyer	For the Sale						Up-to-Date Sale					
	Season 2021/22		Season 2022/23		Season 2021/22		Season 2022/23		(+/-) Season 2021/22			
	Qty. (Kg)	Taka	Qty. (Kg)	Taka	Qty. (Kg)	(%)	Taka	Qty. (Kg)	(%)	Taka	Qty. (Kg)	Taka
Export	0.0	0.00	2,496.8	233.60	21,946.0	0.05%	197.63	9,986.3	0.0%	198.85	-11,959.7	1.22
Internal	2,798,054.6	199.50	2,014,725.5	201.91	41,021,518.5	99.95%	200.26	38,220,328.2	100.0%	200.16	-2,801,190.3	-0.10
Grand Total	2,798,054.6	199.50	2,017,222.3	201.95	41,043,464.5	100.00%	200.26	38,230,314.5	100.0%	200.16	-2,813,150.0	-0.10

Crop of Major Tea Producing & Exporting Countries

Country	Month	2020	2021	2022	(+/-) 2021	2020	2021	2022	(+/-) 2021
Bangladesh *	August	11.32	14.39	10.76	-3.63	45.31	52.15	49.09	-3.06
Sri Lanka	August	22.4	23.8	18.2	-5.6	179.4	211.9	171.3	-40.6
North India	August	143.0	155.0	166.4	11.4	534.9	638.9	642.1	3.2
South India	August	16.8	16.6	14.3	-2.3	135.9	161.3	152.5	-8.8
All India	August	159.8	171.6	180.7	9.1	670.8	800.2	794.6	-5.6
Kenya	June	46.0	43.5	43.3	-0.2	301.0	274.1	270.4	-3.7

* Source: Bangladesh Tea Board's Monthly Statistical Bulletin

General + Other Market(s) This/Last Week

KOLKATA SALE 30- 27TH /29TH SEPTEMBER, 2022

CTC: There was good general demand. Better Assams witnessed a further decline in levels, except for clean well-made & good liquoring descriptions which were barely steady. Cleaner, well-made medium Assams met with good demand and sold at irregular levels around last whilst other medium descriptions were easier. Better Dooars were steady and sold around last levels. Plainer Dooars were barely steady. Exporters showed limited interest on larger Brokens. Local buyers operated on the Dooars & other clean, well-made descriptions.

Tea Category	Brokens	Fannings	Dusts
BEST ASSAMS	392-441	380-429	392-429
GOOD ASSAMS	319-380	307-368	331-380
MED ASSAMS	196-282	196-270	208-282
BEST DOOARS	307-319	307-319	NA
GOOD DOOARS	257-294	257-294	NA
MED/PLN DOOARS	135-221	135-208	135-172

SILIGURI SALE 30- 28TH SEPTEMBER, 2022

LEAF & DUST: Good demand. Improved invoices across all categories tended dearer with competition. Remainder were steady to at times easier in line with quality. Buying Pattern: Internal - Main stay. Blenders- Useful support. Exporters-Selective

Quotations (USC/KG)	Brokens(USC/kg)	Fannings(USC/kg)	Dust (USC/kg)
GOOD / BEST	270-398	264-380	245-319
MEDIUM/ BETTER MEDIUM	196-257	196-251	184-233
COMMON / BLF	129-184	135-184	141-178

COONOOR SALE 30- 30TH SEPTEMBER, 2022

DEMAND: - Good but selective demand at erratic price levels across the categories of teas on offer. MARKET: - The total CTC leaf teas sold this week was 76.96 % (1068004.87kgs) of the total offering of 1382447.52Kgs.

CTC Leaf(USC/KG)	Best	Good	Better Medium	Medium	Plain
Larger Brokens	157-190	123-151	115-121	87-114	75-86
Medium Brokens	173-261	143-172	131-142	94-130	81-93
Smaller Brokens	NQ	141-172	132-140	104-131	88-103
Fannings	166-202	142-164	132-141	115-131	98-114

MOMBASA SALE 30- 26TH /27TH & 28TH SEPTEMBER, 2022

There was reduced demand with prices showing easier tendencies for the 181,340 packages (12,077,628.00 kilos) available with 24.02% neglected.

CTC QUOTATIONS	BP1 – USC	PF1 – USC	PD – USC	D1 - USC
Best	268 – 458	272 – 310	272 – 316	290 – 319
Good	260 – 314	275 – 294	270 – 290	288 – 309
Good Medium	259 – 280	273 – 286	270 – 289	270 – 294
Medium (KTDA)	250 – 274	244 – 282	258 – 266	245 – 274
Medium (Plantations)	206 – 256	204 – 259	203 – 224	202 – 253
Lower Medium	122 – 238	170 – 225	142 – 212	154 – 219
Plainer	100 – 165	110 – 208	130 – 184	130 – 194