

NATIONAL BROKERS LIMITED

<http://nationalbrokersbd.com/>

Tea Auctioneers since 1948

TEA MARKET REPORT – Sale 44 held on Tuesday 27th February, 2024

CTC LEAF: 46,443 packages of tea on offer once again met with a restricted demand.

BROKENS: Select few lines of well made Brokens met with a fairly good demand at around last levels whilst all other descriptions met with much less demand and prices declined with heavy withdrawals. BLF teas met with fair demand at around last levels with fair withdrawals.

FANNINGS: A few lines of good liquoring Fannings met with a fairly good demand at around last levels easing slightly. All other varieties again met with much less demand at easier rates with heavy withdrawals. BLF teas met with fair demand at around last levels with fair withdrawals.

DUST: 13,771 packages of tea on offer met with fair demand. Good liquoring Dusts particularly CDs sold well and appreciated by Tk.3/- to Tk.5/-. Their mediums were also firm at around last levels with few withdrawals. Plain and BLF Dusts saw some improved demand at easier rates. Blenders lent fairly good support with some interest from Loose tea buyers.

COMMENTS: Bulk of the offerings comprised of end of season and reprinted teas which met with a very selective demand. Blenders were less active whilst Loose tea buyers were very selective. Withdrawals continued to be heavy. CDs were a strong feature of the sale.

Our Catalogue: (Sale 44) Avg : Tk 146.72 Sold 43.14 % , (Sale 43) Avg : Tk 156.52 Sold 39.59%

Quotations – This Week – (In Taka)

Brokens	This Week	Last Week	Fannings	This week	Last Week	Dust	This week	Last Week
Best	195-205 nom	200-210 nom	Best	200-210 nom	205-215	PD	78-219	98-231
Good	170-180	170-180	Good	170-180	170-180	RD	75-240	50-235
Good Med	150-160	155-165	Good Med	150-160	155-165	D	97-269	103-332
Medium	125-135	135-145	Medium	130-140	140-150	CD	130-292	133-330
Plain	55-90	60-100	Plain	55-90	60-100	BLF	100-105	94-115
BLF	80-120	70-120	BLF	80-120	70-120			

Exchange Rates 27th February, 2024 Sterling Pound 138.5465 Dollar: Tk. 109.5000

Top Prices – This Week

Category – CTC	Garden	Grade	Package	Price	Buyer(s)
Brokens	Ghazipore	GBOP	20	227/-	Sharif/Meghna
Fannings	* Amrail	PF	30	229/-	Danish
Clonal Brokens	Kedarpur	GBOP(S)BT1	10	330/-	Sharif
Clonal Fannings	* Madhupur	PF(BT1)	10	240/-	Danish
RD/PD (incl.Clone)	Kedarpur	RD(BT1)	10	251/-	Danish
D (incl.Clone)	* Amrail	D	20	269/-	BG
CD (incl.Clone)	* Amrail	CD	10	292/-	Danish

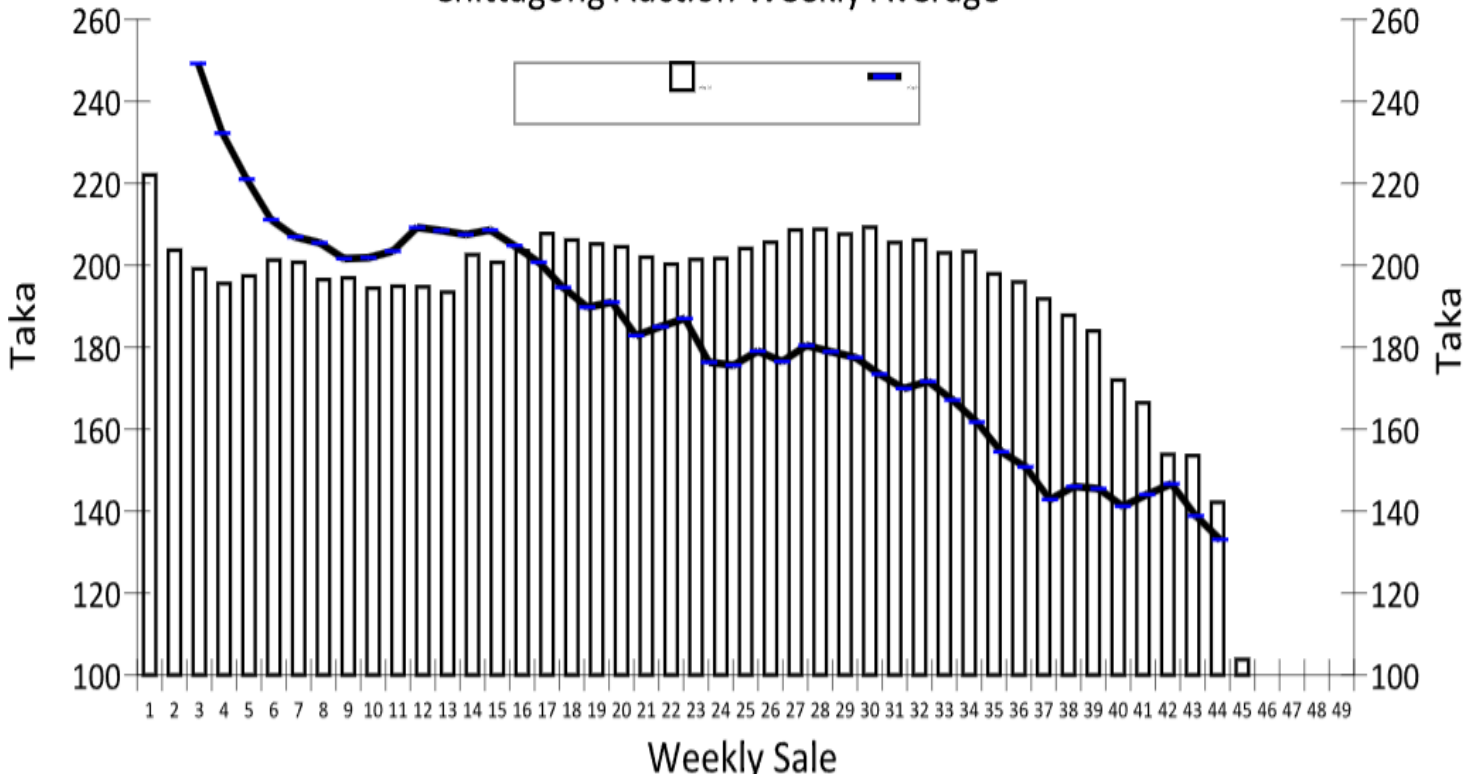
* Above price(s) realised in our catalogue

Offerings

	This Sale (Sale 44)				Next Sale (Sale 45)			
	Season 2023-24		Season 2022-23		Season 2023-24		Season 2022-23	
Type	Packages	Qty/Kg	Packages	Qty/Kg	Packages	Qty/Kg	Packages	Qty/Kg
Leaf	46,443	2,317,506	20,583	1,046,852	43,698	2,180,530	17,282	8,62,371.8
Dust	13,771	6,87,173	4,532	223,003	11,757	5,86,674	5,291	2,64,020.9
Total	60,214	3,004,679	25,115	1,269,855	55,455	2,180,530	22,573	11,26392.7

Chittagong Auction Average - Sale 43
(Season 2023/24): Tk 133.06 & (Season 2022/23): Tk 153.81

Chittagong Auction Weekly Average



Category	For the Sale				Up-to-Date Sale						(+/-) Season 2022/23	
	Season 2022/23		Season 2023/24		Season 2022/23			Season 2023/24				
	Qty. (Kg)	Taka	Qty. (Kg)	Taka	Qty. (Kg)	(%)	Taka	Qty. (Kg)	(%)	Taka	Qty. (Kg)	Taka
CTC LEAF	1,109,622.0	150.17	1,201,591.0	127.16	67,306,719.9	77.5%	192.62	69,145,054.1	79.27%	172.98	1,838,334.2	-19.64
CTC DUST	253,751.6	168.21	389,323.5	151.27	17,780,037.4	22.5%	218.22	17,862,036.6	20.48%	198.46	81,999.2	-19.76
Sub-Total	1,363,373.6	153.53	1,590,914.5	133.06	85,086,757.3	99.9%	197.97	87,007,090.7	99.75%	178.20	1,920,333.4	-19.77
Orthodox	0.0	0.00	0.0	0.00	0.0	0.0%	0.00	499.0	0.00%	850.00	499.0	850.00
Total	1,363,373.6	153.53	1,590,914.5	133.06	85,086,757.3	99.9%	197.97	87,007,589.7	99.75%	178.20	1,920,832.4	-19.77
Green Tea	30.0	758.33	68.6	158.57	36,386.0	0.0%	560.79	3,887.7	0.00%	749.37	-32,498.3	188.58
Oolong Tea	0.0	0.00	0.0	0.00	49.0	0.0%	1,636.73	7.0	0.00%	1,250.00	-42.0	-386.73
Yellow Tea	0.0	0.00	0.0	0.00	28.0	0.0%	1,552.68	20.5	0.00%	1,250.00	-7.5	-302.68
Total	1,363,403.6	153.54	1,590,983.1	133.06	85,123,220.3	99.9%	198.13	87,011,504.9	99.75%	178.23	1,888,284.6	-19.90
Other (s)	1,782.7	226.79	985.0	83.00	46,081.7	0.1%	132.64	216,209.9	0.25%	116.60	170,128.2	-16.04
G.Total	1,365,186.3	153.64	1,591,968.1	133.03	85,169,302.0	100.0%	198.09	87,227,714.8	100%	178.08	2,058,412.8	-20.01

Buyer Purchase Analysis

Buyer	For the Sale				Up-to-Date Sale						(+/-) Season 2022/23	
	Season 2022/23		Season 2023/24		Season 2022/23			Season 2023/24				
	Qty. (Kg)	Taka	Qty. (Kg)	Taka	Qty. (Kg)	(%)	Taka	Qty. (Kg)	(%)	Taka	Qty. (Kg)	Taka
Export	0.0	0.00	67,383.0	81.68	90,188.8	0.02%	134.10	411,569.2	0.47%	84.30	321,380.4	-49.80
Internal	1,365,186.3	153.64	1,524,585.1	135.30	85,079,113.2	99.98%	198.16	86,816,145.6	99.53%	178.52	1,737,032.4	-19.64
Grand Total	1,365,186.3	153.64	1,591,968.1	133.03	85,169,302.0	100%	198.09	87,227,714.8	100%	178.08	2,058,412.8	-20.01

Crop of Major Tea Producing & Exporting Countries

Country	Month	For the Month				Up-to-Date			
		2021	2022	2023	(+/-) 2022	2021	2022	2023	(+/-) 2022
		Bangladesh *	December	6.9	7.78	7.79	0.01	96.5	93.8
Sri Lanka	June	31.1	20.1	22.9	2.80	135.9	133.2	134.4	1.20
North India	June	145.7	119.3	109.7	-9.60	325.3	347.1	344.0	-3.10
South India	June	25.4	23.9	28.2	4.30	119.6	113.7	113.7	-5.90
All India	June	171.1	143.2	137.9	-5.30	448.1	466.7	457.7	-9.00
Kenya	May	45.3	57.9	57.9	0.00	230.6	227.9	225.5	-2.34

OTHER MARKETS

COONOOR SALE 08- 23RD FEBRUARY, 2024

CTC:- Good demand. The total CTC leaf teas sold this week was 86.93% (937506.35kgs) of the total offering of 1078460.53Kgs. Larger Broken sold firm at the bottom end whilst the top end declined substantially, medium and smaller broken at the lower end remained firm whilst the top end sold dearer irregularly with select few improved invoices fetching handsome gains. Fanning sold fully firm. Local buyers and regional packeteers were active along with good support from upcountry buyers. Major Blenders and exporters were quiet in this segment. Larger weight of all sorts in this category went unsold initially however at the fag end of the sale all sorts settled at barely steady prices. Up country and the major blenders were selective in this segment along with limited buying from select exporters. Local & regional packeteers were very selective. All categories in this category sold fully firm to dealer by up to Rs 2/-. Major Blenders along with the exporters were the mainstay in this segment. Local & regional packeteers were subdued. All sorts sold firm to occasionally dealer by up to Rs 2/-. All sections of the trade were fairly active in this segment. All sorts settled at steady prices. Exporters continued to be the mainstay in this category, major blenders were fairly active. Others were rather quiet. The Major blenders buying was 31.92% of the total CTC leaf sold.

CTC Leaf(USC/KG)	Best	Good	Better Medium	Medium	Plain
Larger Brokens	147-182	121-124	112-118	105-111	94-104
Medium Brokens	203-274	127-180	119-125	107-118	98-104
Smaller Brokens	158-281	130-150	118-130	106-117	100-105
Fannings	188-279	130-158	118-131	106-117	99-105

MOMBASA SALE 08- 19TH & 20TH FEBRUARY, 2024

There was good general demand for the 305,360 packages (20,453,741.50 kilos) on offer; 42.59% remained unsold.

CTC QUOTATIONS	BP1 – USC	PF1 – USC	PD – USC	D1 – USC
Best	186 – 400	309 – 436	308 – 514	281 – 380
Good	140 – 273	299 – 329	307 – 335	276 – 318
Good Medium	140 – 261	275 – 326	300 – 318	248 – 326
Medium (KTDA)	120 – 252	140 – 282	140 – 312	155 – 306
Medium (Plantations)	133 – 201	114 – 230	112 – 224	126 – 232
Lower Medium	106 – 172	080 – 180	094 – 176	092 – 173
Plainer	072 – 130	050 – 118	050 – 111	050 – 130